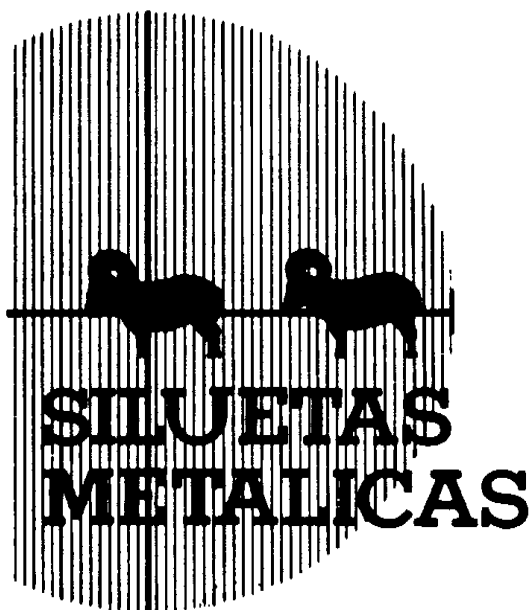


# NRA

High Power Rifle  
Smallbore Rifle  
Air Rifle  
Black Powder  
Cartridge Rifle  
Lever Action

# RIFLE SILHOUETTE RULES



Official Rules and Regulations  
to govern the conduct of all  
Rifle Silhouette Competitions

**NATIONAL RIFLE ASSOCIATION  
OF AMERICA**

11250 Waples Mill Road, Fairfax, Virginia 22030

**REVISED JANUARY 2020**

© 2020 The National Rifle Association of America

**<https://www.nra.org>**

**# NRACS-06**

# **SAFETY IS YOUR BUSINESS! READ THE RULES**

These rules provide for the efficient and orderly operation of a tournament. But *that's not all*. Many local range regulations exist for one reason alone **SAFETY**. Others serve a dual purpose, smooth range operation and **SAFETY**.

It's your responsibility as a competitor or as a tournament official to be familiar with the rules and to know the meaning behind those which are safety oriented.

## **NRA GUN SAFETY RULES**

**The fundamental NRA rules for safe gun handling are:**

- **ALWAYS** keep the gun pointed in a safe direction.
- **ALWAYS** keep your finger off the trigger until ready to shoot.
- **ALWAYS** keep the gun unloaded until ready to use.

**When using or storing a gun, always follow these NRA rules:**

- Be sure the gun is safe to operate.
- Know how to safely use the gun.
- Use only the correct ammunition for your gun.
- Know your target and what is beyond.
- Wear eye and ear protection as appropriate.
- Never use alcohol or drugs before or while shooting.
- Store guns so they are not accessible to unauthorized persons.

Be aware that certain types of guns and many shooting activities require additional safety precautions.

To learn more about gun safety, enroll in an NRA safety training or basic marksmanship course, NRA hunter clinic or state hunter education class.

### **Shooters Read:**

Eye Protection . . . . .	3.19
Loaded Firearms . . . . .	10.1.3
Muzzle Direction . . . . .	10.1.8
Safe Condition . . . . .	10.1.11

### **Range Operators Read:**

Competition Regulations and Range Operations . . .	Sec. 9
Range Control . . . . .	Sec. 10
Tournament Officials . . . . .	Sec. 11

# CONTENTS

## NRA RIFLE SILHOUETTE RULES

	<i>Page</i>
Approved and Registered Tournaments .....	iv
Rules Summary .....	v
Sec. 1. NRA Competition.....	1
Sec. 2. Eligibility and Categories of Competitors .....	3
Sec. 3. Rifles, Equipment and Ammunition .....	5
Sec. 4. Targets .....	11
Sec. 5. Positions .....	12
Sec. 6. Range Standards .....	13
Sec. 7. Courses of Fire .....	14
Sec. 8. Time Limits .....	15
Sec. 9. Competition Regulations .....	16
Sec. 10. Range Commands, Control and Operations.....	19
Sec. 11. Tournament Officials .....	22
Sec. 12. Team Officers' Duties .....	24
Sec. 13. Physically Disabled Shooters.....	25
Sec. 14. Scoring.....	25
Sec. 15. Decision of Ties .....	26
Sec. 16. Protests .....	27
Sec. 17. National Records .....	27
Sec. 18. Competitors' Duties and Responsibilities .....	30
Sec. 19. Classification .....	32
Sec. 20. Official Jury.....	34
Sec. 21. NRA Competition Programs .....	35
Appendix A. General Regulations for NRA Approved Silhouette Tournaments .....	36
Appendix B. General Regulations for NRA Registered Silhouette Tournaments .....	37
NRA Grand Slam Silhouette Club .....	39
Index .....	40

## APPROVED AND REGISTERED TOURNAMENTS

### NRA Sanctioned Tournaments-See Rule 1.6

Application forms for both types of Sanctioned Tournaments may be obtained from the NRA. Official application for approval to conduct an NRA Approved or Registered Tournament must be made to the Competitive Shooting Division. The deadline, in advance of firing date, for the receipt of the completed application forms and programs, is 30 days for Approved and 45 days for Registered Tournaments. See General Regulations for *Shooting Sports USA* deadlines.

A Registered Tournament is the more formal of the 2 types. Differences between the 2 types of competitive tournaments are:

	Approved	Registered	Rule
Scores used for classification	Yes	Yes	19.4
NRA Classification books used	Yes	Yes	19.5
Scores used for National Over-the-Course Records	No	Yes	17..5
Scores used for Long Run Records	Yes	Yes	17.5.1
NRA registration fee per competitor (remitted after the tournament is fired). This is explained in sponsor's packet	No	\$3.50* \$4.50# \$6.50@	Gen'l Reg.
Competitors must be NRA members.	No	No	1.6(f)
Minimum number of shots required	Yes	Yes	Section 7
NRA classification or category system must be used	Yes	Yes	19.4

**NRA Membership Number is required** for classification purposes in all NRA Sanctioned Tournaments. Should a competitor not be an NRA member, he will be assigned a special number which allows his scores to be entered into the computer.

Fixed award schedule	No	Yes	Gen'l Reg. A4, B6
Tournament Officials competing	Yes Rule 11	Yes Rule 11	11, Gen'l Reg. A8, B8
Sponsor required to furnish each competitor with Official Bulletin	No	Yes	Gen'l Reg. A14, B11
Program prepared and distributed by Sponsor	Yes	Yes	21

\* Applies to Registered Tournaments  
# Applies to State Championships  
@ Applies to Regional Championships

## RULES SUMMARY

COURSE OF FIRE	COURSE OF FIRE RULE#	EQUIPMENT RULE#	SIGHTS	BARREL LENGTH MAX.	WEIGHT MAX.	TARGET	POSITION AND RULE #	MAX RANGE	AWARD COLOR	NATL. RECORDS LONG RUN RECORDS GRAND SLAM
High Power Rifle	7.1	3.1	Any	30"	10 lb. 2 oz.	Full-size	Standing 5.8	500m	orange	yes
High Power Hunting Rifle	7.1	3.1.1	Any	26"	9 lb.	Full-size	Standing 5.8	500m	peach	yes
Smallbore Rifle	7.2	3.2	Any	30"	10 lb. 2 oz.	1/5-size	Standing 5.8	100m	brown	yes
Smallbore Hunting Rifle	7.2	3.2.1	Any	26"	8½ lb.	1/5-size	Standing 5.8	100m	tan	yes
Open Air Rifle	7.3	3.3c	Any	40"	16 lb.	1/10-size	Standing 5.8	45 yards	dark blue	yes
Target Air Rifle	7.3	3.3a	Any	Factory Original	Unlimited	1/10-size	Standing 5.8	45 yards	dark blue	yes
Sporter Air Rifle	7.3	3.3b	Any	Factory Original	11 lb.	1/10-size	Standing 5.8	45 yards	dark blue	yes
Black Powder Cartridge Rifle	7.1	3.4	Typical of era	Typical of Era	12 lb. 2 oz.	Full-size	200m Standing 300-500m Any 5.8.1	500m	gray	yes
Scope Black Powder Cartridge Rifle	7.1	3.4.1	Scope Typical of Era	Typical of Era	15 lb.	Full-size	200m Standing 300-500m Any 5.8.1	500m	gray	yes
High Power Semi Automatic Military Rifle	7.1	3.1.2	Factory Original	Factory Original	As Original	Full-size	Standing 5.8	500m	none	none
Lever Action	7.4	3.1.3	Open, Receiver or Tang	Factory Original	As Original	Full-size	Standing 5.8	200m	maroon	yes
Pistol Cartridge Lever Action	7.4	3.1.3	Open, Receiver or Tang	Factory Original	As Original	1/2-size Hunter's	Standing 5.8	100m	maroon	yes
Smallbore Rifle	7.4	3.1.3	Open, Receiver or Tang	Factory Original	As Original	1/2-size Smallbore Hunter's	Standing 5.8	100m	maroon	yes

# NOTES

# NATIONAL RIFLE ASSOCIATION OF AMERICA

## Official Rules For Rifle Silhouette Competition

These Rules establish uniform standards for NRA sanctioned Rifle Silhouette competition. Where alternatives are shown, the least restrictive conditions apply unless the tournament program sets forth limitations.

NRA Sanctioned Competition is competition conducted by NRA Affiliated Clubs or Organizations, when such competition has been authorized by the National Rifle Association in advance of firing. (There are two types of Sanctioned Competition: Approved Tournaments and Registered Tournaments.) See Rule 1.6 for further details.

Tournament sponsors may not alter these Rules. If sponsors require additional rules for special conditions, the additions must be fully set forth in the program.

Forward recommendations for rule changes to the Silhouette Committee in care of the National Rifle Association.

***NOTE:** Rules in which major changes have been made since publication of the previous Rule book are marked thus: (• 1.1).*

## 1. NRA COMPETITION

**1.0 NRA Competition** - NRA Competition is a Competition which is authorized in advance of firing by the National Rifle Association. The program, range facilities and officials must comply with standards established by the NRA. The types of tournaments which are Sanctioned are listed in Rule 1.6.

**1.1 Sanctioned Tournaments** - A Sanctioned tournament is a series of matches covered by an official program. Such matches may be all individual matches, all team matches, or a combination of both, which must be conducted by an NRA affiliated club or organization. They may all be fired matches or a combination of fired and aggregate matches. A tournament may be conducted on one day, or successive days, or may provide for intervening days between portions of the tournament, such as tournaments programmed to be conducted over more than one weekend.

**1.2 Authorization** - Before being publicized in programs or otherwise, the sponsoring organization of each type of competition mentioned in Rule 1.6 shall have agreed to comply with the current regulations for such competition and shall have received notice from the NRA that the competition applied for has been authorized.

**1.3 Rules** - The local sponsor of each type of competition must agree to conduct the authorized competition according to NRA, Rules, except as these Rules have been modified by the NRA in the General Regulations for that type of competition.

**1.4 General Regulations** - The local sponsor of each type of competition must agree to comply with the General Regulations published by the NRA for the competition concerned. The General Regulations are set forth in the back of this rule book.

**1.5 Refusal or Withdrawal of NRA Authorization** - The NRA may refuse to authorize or may withdraw its authorization for any competition which cannot, or does not, comply with the requirements for that competition.

**1.6 Types of Tournaments** - The types of tournaments listed below are those which are Sanctioned by NRA in its competitive shooting program.

- (a) *International Matches* - Arranged by the NRA with the recognized national shooting organization(s) of the countries concerned. The officials thereof are appointed by the NRA.
- (b) *International Team Tryouts* - Are U.S. tournaments conducted under NRA Rules organized or authorized by the NRA as prelimi-

nary or final tryouts for the selection of International Team members. The officials thereof are appointed by the NRA.

- (c) *National Championships* - Organized by the NRA, in conjunction with local sponsoring organizations as selected by the NRA Silhouette Committee. These tournaments will be Registered.
- (d) *Regional Championships* - Arranged between the NRA and a local sponsoring organization, These tournaments will be Registered.
- (e) *State Championships* - Annual tournaments authorized and/or conducted by State Rifle and/or Pistol Associations affiliated with the NRA, Such State Associations may, if desired, authorize local organizations to sponsor and conduct State Championships, In states where there is no NRA Affiliated State Association, the NRA may authorize a local organization to sponsor and conduct the State Championship. State Championships will be Registered Tournaments.
- (f) *Registered Tournaments* - May be authorized by the NRA after application has been filed by the sponsoring organization. Application forms and printed General Regulations are available from NRA on request. National Records may only be established in Registered, Tournaments (see Rule 17,1).
- (g) *Approved Tournaments* - May be authorized by the NRA after application has been filed by the local organization which will act as the sponsor. Application forms available from NRA on request. Match sponsors may require all competitors to be NRA members if specified in the program.
- (h) *Sanctioned Leagues* - (shoulder-to-shoulder or postal) May be authorized by the NRA after application has been filed by a local group or organization. Application forms are available from NRA on request. Sanctioned League scores are used for classification, A League need not be operated by an Affiliated Club or Organization,
- (i) *Postal Matches* - Organized by the NRA and publicized to groups concerned through Shooting Sports USA, announcements and special mailings,
- (j) *Special Tournaments* - May be sanctioned by NRA for types of shooting not otherwise a part of the NRA program.
- (k) *State and Senior Games* - Tournaments which are part of the State and Senior Games program. Such tournaments are not charged fees, nor will any scores fired be used for classification, A simplified sanctioning procedure may be used, and they will be listed in Coming Events with the only contact being the State Coordinator.

### **1.7 Types of Matches**

- (a) *Match* - A complete event as indicated in the program for the awarding of certain specific prizes, A match may consist of one or several stages, It may, in the case of aggregate matches, include the scores fired in several subsidiary matches.
- (b) *Stage* - A portion of a match which consists of one or more strings fired in one position, distance, time allowance, or target.
- (c) *Open Match* - A match open to anyone, except that if so stated in the program an open match may be limited to one or any combination of the following: (a) United States citizens; (b) members of the National Rifle Association of America; and/or (c) with respect to non-U.S. citizens, persons who are members in good, standing of their respective National Shooting Federations or Associations. (See Rule 2.1.1.)
- (d) *Restricted Match* - A match in which the competition is limited to specified groups, i.e., Juniors, Women, Police, Civilians, Veterans, etc.; or specified classes, i.e., Master, AAA, AA, A, B, etc.
- (e) *Classified Match* - A match in which awards are given to winners and to the highest competitors in several specified classes such as Master, AAA, AA, A, B. The classification of competitors may be accomplished by the National Classification System (Sec. 19) or by



other means. The program for classified matches must specify the groups or classes in which awards will be made.

- (f) *Invitational Match* - A match in which participation is limited to those who have been invited to compete.
- (g) *Squadded Individual Match* - A match in which each competitor is assigned a definite relay and target by the Statistical Office. Failure to report on the proper relay or firing point forfeits the right to fire. All entries must be made before firing commences in that match, except when otherwise stated in the tournament program.
- (h) *Unsquadded Individual Match* - A match in which the competitor is not assigned a definite relay or target by the Statistical Office. The competitor reports to the Range Officer within the time limits specified in the program and is then assigned to a target and a relay in which to fire.
- (i) *Re-Entry Match* - A match in which the competitor is permitted to fire more than one score for record; one or more of the highest scores being considered to decide the relative rank of competitors. The number of scores which may be fired, and the number of high scores to be considered in deciding the relative rank of competitors must be specified in the program.
- (j) *Squadded Team Match* - A match in which the teams are assigned a definite time to fire. Teams may be assigned one or more adjacent targets. All entries must be made before firing commences in that match. The entire team must report and fire as a unit.
- (k) *Unsquadded Team Match* - A match in which the teams may report to the firing line at any time within the limits specified in the program, targets being assigned by the Range Officer. The entire team must report and fire as a unit, unless the program provides otherwise.
- (l) *Aggregate Match* - An aggregate of the scores from two or more matches. This may be an aggregate of match stages, individual matches, team matches, or any combination, provided the tournament program clearly states the matches which will comprise the aggregate. Entries in aggregate matches must be made before the competitor commences firing in any of the matches making up the aggregate match.

## PUBLIC AFFAIRS

All tournament sponsors are urged to give special consideration to the needs of news media personnel in order to achieve maximum publicity for the competition. Public news media personnel representing print and/or broadcast should be given every consideration and cooperation in keeping with the proper conduct of the competition.

## 2. ELIGIBILITY AND CATEGORIES OF COMPETITORS

**Eligibility and Categories of Competitors** - The conditions of a match shall prescribe the eligibility and categories of competitors, teams or individuals in accordance with Rule 1.6 and/or the definitions contained in Section 2. Any limitations of eligibility to compete must be stated in the match program.

**2.1 Members of the National Rifle Association** - Any individual member in good standing including Benefactors, Patrons, Endowment, Life, Annual, Associate, Non-Resident, and Junior members.

**2.1.1 Non-US. Citizens** - Non-U.S. citizens may compete in any NRA Sanctioned Tournament, unless further restrictions are imposed by conditions stated in the program.

## 2.2 - Blank

**2.2.1 Senior** - A person may compete as a Senior beginning on January 1, of the calendar year in which that competitor's 60th birthday occurs.

**2.3 Junior** - A person may compete as a Junior through December 31, of the calendar year in which that competitor's twentieth birthday occurs. Individuals who have National Guard, Reserve, or Active Duty Status and receive support may not compete as Juniors.

**2.3.1 Intermediate Junior** - A Junior may also compete as an Intermediate Junior from January 1, of the calendar year in which that competitor's 15th birthday occurs through December 31, of the calendar year in which the 17th birthday occurs.

**2.3.2 Sub-Junior** - A Junior may also compete as a Sub-Junior through December 31, of the calendar year in which that competitor's fourteenth birthday occurs.

## 2.4 - Blank

**2.5 Categories and Special Awards** - If there are a sufficient number of competitors of a specific group (i.e., Women, Juniors, etc.), a match sponsor may establish a separate category for this group and make classification awards within this category, such as 1st AAA Woman, 1st AA Woman, and so on. However, if there are insufficient entries of a specific group to warrant such a separation, and if the sponsor still wishes to provide recognition to this specific group, an overall Special Award may be provided such as High Woman, High Junior, etc., and all competitors in this specific group would be eligible for this one Special Award. Details concerning categories and special awards must be clearly outlined in the tournament program. Listed below are suggested categories for NRA-sanctioned silhouette tournaments. Other categories are included at the match sponsor's option, if otherwise qualified.

*\* Woman, Junior, Senior, Hunting Rifle, Foreign Competitor, Iron Sights, etc.*

## 2.6 - Blank

- **2.6.1 Military Veteran** - Former military personnel, other than active duty or reserve, in possession of any one of the following documents, form DD 214, retired military identification card or membership in a veterans' organization are allowed to compete.

## 2.7- 2.9 -Blank

**2.10 Team Representation** - No individual may be a Team Captain, Coach, firing member, or alternate firing member on more than one team in any match.

- **2.11 Open Teams**- Teams may be comprised of members without restriction on residency or club membership.

**2.12 State Association Teams** - Members, including Team Captain and Coach, of such teams must be bona fide residents of the State represented, and individual members of the State Rifle and/or Pistol Association represented if such State Association provides for individual membership, or be members of a rifle and/or pistol club which is affiliated and in good standing with the State Association concerned at the time of the competition. State Association Teams permitted to enter the competition concerned by the tournament program conditions must be authorized and accredited by the State Association for that tournament. Authorization shall be signed by the State Association President, Vice President or Secretary. Such State Associations must be affiliated and in good standing with the NRA at the time of the competition. If specifically allowed by conditions of the program, a person not a State Association member may serve as the coach of a State Association Team. (That person may not be a firing member.)

**Note: Teams representing State Associations, Leagues and other Associations (composed of more than one club) are not club teams. Such teams may enter NRA sanctioned matches only when the program specifically authorizes such entry.**

## 2.13 - Blank

- **2.13.1 Military Veterans Team**- Former military personnel, including Team Captains and firing Coach, other than active duty or reserve, in possession of any one of the following documents, form DD 214, retired military

identification card or membership in a veterans' organization are allowed to form a legal team and compete.

## **2.14- 2.19 - Blank**

**2.20 Residence** - In those matches which are limited to residents of any specified geographical area a "resident" is defined as:

- (a) A person who presents a photo identification issued by a government entity, which shows a residential address within the specified geographical area.
- (b) Military Personnel: The place of residence of members of the Military on active duty is defined as the place at which they are stationed by reason on official orders, provided they have been so stationed within the specified area for a period of at least 30 days immediately prior to the day of the match. In the case of Retired, Reserve, or National guard personnel not on active duty, the provision of paragraph (a) will apply. Naval personnel assigned on sea duty qualify for residence in the area, which is the usual base or home port of the unit to which attached.
- (c) Federal and State Law Enforcement Officers: The provisions of paragraph (b) will apply.

## **3. RIFLES, EQUIPMENT AND AMMUNITION**

**CERTIFICATION OF RIFLES:** Rifles must be weighed, measured and certified before being fired in a match. The rifle must be fired in the same configuration as when certified. No one may win an award with an uncertified rifle. In rifle competition, loads that damage targets may be disapproved by the Range Officer or Jury. In case of a malfunction certified by the Range Officer or Jury, a replacement rifle must be certified. (See Rule 9.8).

### **RIFLES**

• **3.1 High Power Silhouette Rifle** - A rifle, caliber 6mm or larger, provided no belted cartridges or Magnums are allowed, meeting the following specifications:

- (a) Maximum weight 10 pounds, 2 ounces, including sights.
- (b) Any sights, telescopic or metallic may be used. Scopes may not be more than 2 inches above the rifle as measured from the top of the receiver to the underside of the scope tube, nor may the scope be offset from the top center line of the receiver. Any sighting device programmed to activate the firing mechanisms is prohibited.
- (c) Any trigger not subject to accidental discharge. Triggers which function on release are not permitted. In the event of accidental discharge, the Range Officer shall require trigger adjustment or replacement of the rifle.
- (d) Stock: The stock must be traditionally styled and may not be bent and/or twisted so as to deviate from conventional configurations such as factory rifle stocks or silhouette stocks as manufactured by Fajen, McMillan, H-S Precision, and others. The forend, including the trigger guard mounts and screws, shall not exceed 2 1/4 inches wide, and 2 1/4 inches deep measured from the centerline of the bore. Magazines do not have to conform to stock measurements but those that extend below the stock line may not be used as support as per Rule 3.I(h) and 3.14. The forend shall extend a minimum of 8 inches forward of the forward edge of the receiver ring. The comb shall not extend above the centerline of the bore, but Monte Carlo roll may rise 1/2 inch on the off side. Buttplate or recoil pad may not extend below the lower line of the stock.
- (e) Attachments which do not cause any portion of the rifle to exceed the weight or dimensions as listed herein are permitted provided they do not extend past the end of the barrel. Sighting devices are not considered "attachments".

- (f) Trigger guard must be present and may not vary from conventional configuration for the purpose of providing added thumb or palm support and shall be no deeper than 1 5/16 inches below the bottom line of the forend. (Note: TIC Contender Carbines and Ruger Single Shot rifles are exempt, provided the additional depth of the trigger guard is not used as palm or thumb support.)
- (g) The barrel may be no longer than 30 inches including any sleeve or attachment, as measured from the face of the closed bolt to the end of the barrel.
- (h) Exceptions: U.S. Rifle caliber .30 M1, M14 and M1A. These rifles only may exceed the weight limit. Telescopic sights are not permitted. The magazine of the M1A or M14 may not be used as a palm rest.

• **3.1.1 High Power Hunting Silhouette Rifle** - A hunting style rifle having a maximum weight of 9 pounds, including sights and if applicable, an empty magazine or clip. The intent of this rule is to describe a common hunting rifle.

- (a) Caliber: 6mm or larger, provided that no belted cartridges or Magnums are allowed.
- (b) Sights: any telescopic or metallic sight may be used. Scopes may not be more than 1.5 inches above the rifle, as measured from the top of the receiver to the underside of the scope tube, nor may the scope be offset from the centerline of the bore. **Exception:** for rifles that eject the empty cartridge case straight up and that normally use an offset scope, the scope may be offset. Any sighting device programmed to activate the firing mechanism is prohibited.
- (c) Stock: A hunting style stock; thumbhole-type stocks are not permitted. Attachments, either removable or permanent, are not permitted. Swivels and slings are permitted, but slings may not be used for arm support in shooting. Dimensions may not exceed those described in 3.1(d).
- (d) Trigger: Trigger pull shall not be less than 2 pounds. In the event of an accidental discharge, range officers shall require adjustment of the trigger or replacement of the rifle. Rifles must be equipped with a functional safety.

All safety features, including any manual safety, must be functional.

- (e) Barrel: A hunting style contoured barrel that tapers from chamber to muzzle. Bull barrels are not permitted. A factory tuner that does not act as a muzzle brake or compensator is permitted. Maximum barrel length is 26 inches, including tuner. (See Rule 3.16.1).
- (f) Magazines: Magazines may not be loaded with more than 5 rounds.

**Exception:** During a Shoot Off, single cartridge loading may be used at direction of the Range Officer.

**3.1.2 High Power Semi Automatic Military Rifle** - Any center fire, self-loading rifle, as issued for general service by the armed forces of any nation, or the same type and caliber of commercially manufactured rifle, having not less than 4-1/2 pound trigger pull, with standard type stock. In all courses, the standard box magazine will be attached. A hinged butt plate, if installed, will be used only in the folded position. Rubber recoil pads may be used. The gas system, if any, must be fully operational. External modifications will not be allowed. The application of synthetic coatings, which includes those containing powdered metal, to the interior of the stock to improve bedding is authorized provided the coating does not interfere with the function or operation of safety features. The front and rear sights must be of original design, but may vary in dimensions of rear sight aperture and front sight blade. The internal parts of the rifle may be specially fitted and include alterations which will improve the functioning and accuracy of the arm, provided such alterations in no way interfere with the proper functioning of the safety devices as manufactured.

- a. 6mm or larger caliber.
- b. Any magazine may be used and may be included in the grasp.
- b. Cartridges may be loaded from the magazine or single loaded.

• **3.1.3 Lever Action Silhouette Rifle** – Listed below are the three classes of Lever Action Silhouette Rifles. The below listed rules (a - f) apply to all classes of Lever Action Silhouette Rifles. No rear or front sight may contain a lens, magnified or non-magnified. No extended mounts are permitted. (The intent of these rules is to establish a match for common hunting carbines and other lever action rifles. The match is focused toward shooters who enjoy shooting hunting arms and do not want to make the investment required of other specialized types of shooting competitions.)

- a. Rear sights may be open, receiver, or tang sights, mounted as originally intended. Corrective lenses are allowed in the rear site only. No extended mounts are permitted. The front sights must be a post or bead or a fixed non magnified round aperture. A front sight anti-glare tube which may be no longer than 1 1/8" to include any attachments and no longer than a 3/4 outside diameter, may be used.

Fiber optic material may be used in or on the post or bead and may not be longer than its support blade and not to exceed 1 1/8" in length. In an antiglare tube, the fiber optic material may not be any longer than the tube or extended outside the tube. The fiber optic sights do not need to be commercially manufactured.

- b. Barrels must be original or may be relined. Original barrels re-bored to a larger caliber are allowed. Any safe trigger is allowed. Stocks must be of original configuration. Recoil pads, replacement buttplates, and removable cheek pieces are allowed.
- c. Ammunition may be loaded with smokeless or black powder, using jacketed or cast bullets, with or without gas checks. All bullets must be round or flat nosed suitable for tubular magazine use. Any cartridge causing target damage or deemed unsafe may be banned.
- d. Firing period will include a 30 second ready (loading) period, and 2 minutes for 5 shots. Ammunition must be loaded through the tubular magazine. Ammunition may not be loaded directly into the chamber.
- e. Binoculars may be used for spotting. Spotting scopes or stands may not be used. Clothing that adds stability to the shooting position is not allowed. Rule 6.9, concerning wind flags will not apply. Personal wind indicating devices are not allowed in the vicinity of the competitors.
- f.) Classification:
  - Master.....35-40
  - AAA .....29-34
  - AA .....22-28
  - A .....15-21
  - B .....0-14

#### 1. **Lever Action Silhouette Rifle -**

- (a) Any lever action center fire rifle .25 caliber or larger with a tubular magazine of original manufacturer or replica thereof. A rimmed case loaded with a round or flat nosed bullet must be used. **Exception:** .30 Remington and .35 Remington are allowed
- (b) Targets: Long Range Pistol, at distances of 50 - 100 - 150 - 200 meters.

#### 2. **Pistol Cartridge Lever Action Silhouette Rifle -**

- (a) Any lever action rifle with a tubular magazine. A rimmed pistol cartridge loaded with a round or flat nosed bullet must be used, i.e. 25-20, 32-20, 38's, 357 Magnum, 38-40, 44's, 44-40, 45 Colt, 45 Long Colt, .22 Magnum and .22 long rifle.
- (b) Targets: Hunter's Pistol, at distances of 40-50-75-100 meters.

### 3. Smallbore Silhouette Rifle -

- (a) Any lever action, pump, or semi-auto rimfire rifle with a tubular magazine. Only .22 long rifle ammunition is allowed. Hyper velocity ammunition is prohibited.
- (b) Targets: Smallbore Hunter's Pistol, at distances of 40-50-75-100 meters.

**3.2 Smallbore Silhouette Rifle** - Identical to the description of the High Power Silhouette Rifle, except that the rifle shall be chambered for only factory loaded .22 caliber short, long or long rifle rimfire cartridges. Hot loads, such as "Stingers", are not permitted. See Rule 3.17.

**3.2.1 Smallbore Hunting Silhouette Rifle** - Identical to the description of the High Power Hunting Silhouette Rifle, except that (a) the rifle may be a single-loading rifle, (b) the weight may not exceed 8 1/2 pounds, (c) the rifle shall be chambered for only factory loaded .22 caliber short, long or long rifle rimfire cartridges, and (d) barrel turners or additional weights are not permitted.

### 3.3 Silhouette Air Rifle:

- (a) Target Air Rifle: Any unaltered factory target air rifle designed for U.S. and International 10 meter competition. (i.e., as produced or sold by Anschutz, Beeman, Crosman, Daisy, Feinwerkbau, RWS, Steyr and Walther). Use of scopes or iron sights, including diopter sights is allowed. Any older gun may be brought up to current factory specifications using only factory catalogue barrel weights.
- (b) Sporter Air Rifle: Any unaltered factory sporter air rifle that is or was a catalogue item, readily available over the counter to the general public, weighing no more than 11 pounds, with a scope and mounts. Rifles utilizing pre-charged systems of any kind other than 12.0 gram disposable CO<sub>2</sub> units are prohibited.
- (c) Open Air Rifle: Any air rifle weighing no more than 16 lbs. with scope and mounts. Length of barrel and action measured from the rear of the metal action or air chamber to the end of the muzzle, including any extension, must not exceed 40". Rifle may utilize any self-contained or externally-charged compressed air system, but such system must be completely self-contained at time of firing. Hook buttplates are prohibited. All air rifles not meeting Rules 3.3(a) or 3.3(b) will be fired in the Open Air Rifle class. The storage of reservoir tanks for either compressed air or CO<sub>2</sub> is prohibited on the firing line or in adjacent spectator areas. (See Rule 9.9.1.)

• **3.4 Black Powder Cartridge Rifle** - A hunting or military style rifle, single shot, originally made for black powder cartridges, of United States manufacture prior to 1896 and being typical of the era. Replicas thereof, regardless of origin of manufacture, are permitted. Hammer must be exposed. If replacement barrels, stocks, or other parts are used, they must be as original. No Schuetzen-style rifles permitted. One rifle will be used during all phases of the match. Examples of permissible rifles are: Ballard, Buck, Bullard, Cole, Farrow, Maynard, Peabody, Redfield, Remington Hepburn, Remington Rolling Block, Sharps, Springfield Trapdoor, Stevens Tip-up, Stevens No. 44, Wesson Falling Block, Wesson (hinged barrel), Whitney Phoenix, Whitney Rolling Block, Winchester 1885, and Wurflein. While the following single shot actions may not conform to the exact criteria of Rule 3.4, they are allowed because they conform to the spirit of the competition in form and function, provided the firearms conform to all other configurations of Rule 3.4: Browning Model 1878, Browning Model 1885, C. Sharps '75, Falling Block Works, Stevens 44 1/2 and Wickliff '76. Replicas other than exact reproductions of pre-1896 Black Powder actions as described above and shooting equipment as described herein, must be passed by the Silhouette Committee with the advice of the Black Powder Committee. It shall be the competitor's responsibility to provide any documentation which may be required to establish that all Black Powder Cartridge Rifle equipment conforms to these rules.

- (a) Maximum weight 12 pounds, 2 ounces.
- (b) Rear sights will be of vernier or ladder type, typical of the era, either open or peep, mounted on the tang or barrel. No modem style receiver, glass, or tube sight permitted. Front sights must be typical of the era, and may be shaded. No modem or olympic-type sights permitted.

- (c) Trigger typical to the rifle and not subject to accidental discharge.
- (d) Cartridges will be of the American black powder era, originally black powder loaded, manufactured prior to 1896, and originally chambered in American-manufactured rifles, taking into account normal variations in types of brass and primers, as well as bore sizes, rifling styles, twist and chamber dimensions. Limited use and special chambering (wildcats) are not acceptable. Cartridges must be loaded with black powder or any BATFE approved black powder substitute only. No smokeless powder in any quantity may be used. Match officials, at their discretion, may select one or more loaded cartridges at random, pull bullet, and check contents. Competitors will furnish their own ammunition.
- (e) Cast or swaged lead or lead alloy projectiles only; no jacketed or gas checked bullets. Paper patching permitted. Breech seating is permitted but no additional time will be allowed.
- (f) Stock: Forearm must be attached and shall be of traditional design not to exceed 2 inches in width, cannot extend below the line of the bottom of the receiver or base of trigger guard, and no attachments will be allowed on the forearm. Measured from the centerline of the bore, the drop at the heel shall not exceed 2 3/4 inches; drop at toe shall not exceed 8 inches. No portion of the rifle stock behind the rifle action shall be higher than 3/4 inch below the centerline of the bore. The butt shall not be longer than 5 1/4 inches top to bottom. Cheek pieces are permitted, but no roll over. Pistol grips are permissible, but no flared or hand-contoured styles. Crescent-style buttplates are permissible, but cannot be over 1 1/8 inch deep when measured from a straight line from points of the buttplate. Commercial recoil pads are permissible. Stocks and forearms must be made of natural wood and must be in keeping with designs of stocks of the era. (See Rule 3.18.)
- (g) No slings are permitted.
- (h) Electronic and mechanical wind meters are not allowed. Small personal wind flags are permitted, but may not be forward of the muzzle of the firearm. Mirage bands are not permitted.

**3.4.1 Scoped Black Powder Cartridge Rifle** - Identical to the description of the BPCR (Rule 3.4) with the following exceptions:

- (a) Maximum weight with scope - 15 pounds
- (b) No length or power limitation on the scope. Scope tube body to be 3/4" or less in diameter and any ocular or objective lenses, adjusting or assembly rings to be less than 1" in diameter.
- (c) No Internal scope adjustments for windage or elevation.
- (d) Mounts are to be of the traditional style of the period, and contain the windage and elevation adjustments for the scope in either, or both, the front or rear mounts. No click adjustments in the mount. Either dove tail mounting or scope block mounting is allowed.

Original scope mounts of either the Cataract or Malcom style or variations thereof, or replicas or derivatives of either style, are allowed provided the replica or derivative conforms to the criteria of paragraph (d) above.

- (e) Cheek pieces may be used and may be of any height.

## EQUIPMENT

### 3.5 - 3.7 - Blank

**3.8 Spotting Scope** - The use by the coach of a telescope or other optical device to spot shots is permitted.

### 3.9 - Blank

**3.10 Shooting Mat** - A shooting mat or ground cloth is permissible in Black Powder Cartridge Rifle competition.

**3.11 Gloves** - Gloves may not be worn except when required for warmth. Conditions permitting the use of gloves will be determined by the Jury. Padded or unnecessarily heavy gloves may not be worn.

**3.12 Clothing** - Commercial type trap and skeet vests (sleeveless) and shotgun shooting shirts are permitted as well as clothing normally suitable for existing climatic temperatures. Shooting coats, unnecessarily heavy clothing, or anything on the person that would provide artificial support such as clothing having excess padding or stiffening material or which restricts or supports the body in the shooting position may not be worn. Any dispute regarding clothing will be submitted to the Jury for decision. (See Rule 20.10)

- (a) Sleeveless leather, vinyl, heavy fabric or multiple layered vests that may be considered or construed to be unnecessarily heavy or to provide artificial support are permitted if they can be closed over a gauge made from 4 inch thin wall PVC pipe, not less than 30 inches in length, passed through the entire length of the vest, and opened or vented from the bottom edge to a point two inches above the crest of the hipbone.
- (b) The gauge will be available to the competitors for self-checking throughout the tournament. Enforcement will take place at the firing line when garments to be worn underneath are in place.
- (c) In Black Powder Cartridge Rifle competition only, period costumes are permitted.
- (d) "P.A.S.T."-type recoil shields are permitted in all rifle events. If such shields are used, no other shooting vests may be used.

**3.13 Slings** - Slings may be attached to the rifle but may not be used for support of the hand or arm.

**3.14 Palm Rest** - A palm rest may not be used. A palm rest is any attachment or extension below the forearm which aids the normal hand grip and support of the rifle by the forward hand/arm.

**3.15 Buttplates and Cheekpieces** - A butt or buttplate having a curved rear surface in which the depth of the curve exceeds 1/2 inch when measured from a straight line drawn from the top to the bottom of the buttplate is prohibited. Buttplates must be centered. Adjustable cheek pieces must be fixed and sealed in place. See 3.4(f) regarding Black Powder Cartridge Rifle. Rule 3.15 does not apply to Target or Open class Air Rifles.

**3.16 Release Triggers** - Triggers which function on release are prohibited.

**3.16.1 Compensators and Muzzle Brakes** - The use of compensators, muzzle brakes and barrel porting is prohibited, except in Air Rifle Silhouette competition. (The adjustment holes on the Boss-CR are not considered to be compensators, muzzle brakes or barrel porting.)

**3.17 Ammunition** - Centerfire ammunition having a projectile (bullet) of 6mm or larger caliber but no armor piercing or tracer types are permitted. Smallbore ammunition shall be factory loaded .22 caliber short, long or long rifle rimfire cartridges. Hot loads, such as "stingers," are not permitted. Air Rifle shall be lead pellets only not to exceed .22 caliber. See Rules 3.1, 3.1.1, 3.2, 3.2.1 and 3.3. The use of any other type ammunition may be prohibited by local range or tournament regulations. Loads that damage targets may be disapproved by the Chief Range Officer, Match Director or Jury. *See rule 10.9 for defective cartridges.*

**3.18 Equipment** - General - All devices or equipment which may facilitate shooting and which are not mentioned in these Rules, or which are contrary to the spirit of these Rules and Regulations are forbidden. The Match Director or Jury shall have the right to examine a shooter's equipment or apparel. The responsibility shall be upon the competitor to submit questionable equipment and apparel for official inspection and approval in sufficient time prior to the beginning of a match so that it will not inconvenience either the competitor or the official(s).

**3.19 Eye Protection** - All competitors and other personnel in the immediate vicinity of the range complex are urged to wear eye protection devices.

**3.20 Ear Protection** - All competitors and other personnel in the immediate vicinity of the range complex are urged to wear hearing protection devices.

*Note: Match sponsors (and/or ranges) may require eye and ear protection.*

**3.21 Empty Chamber Indicators** - An ECI is required in all NRA Silhouette competition to indicate the action is open and the chamber is empty.



The Indicator must keep the action open, be inserted into the chamber, and have a bright color flag extending from the firearm's receiver.

## 4. TARGETS

• **4.1** Targets for NRA sanctioned Silhouette competition shall be of the size and shape established by the scale drawings in the NRA Silhouette Handbook or as scaled to alternate distances in accordance with Rule 6.4.1 and Rule 17.5. All targets of the same type shall be faced in the same direction in each bank. There are four basic kinds of silhouettes: Chicken, Pig, Turkey and Ram. High Power Rifle, Black Powder Cartridge Rifle and Lever Action competition are fired on full size targets. Pistol Cartridge and Smallbore Lever Action are fired on one-half size Hunter's Pistol (Pistol Cartridge) and Smallbore Hunter's Pistol (Smallbore Lever Action) targets. Smallbore Rifle uses one-fifth size targets. Air Rifle is fired on targets which are one-tenth full size. (The hole between the horn and the head of the Ram target shall be optional in the Smallbore Rifle target and the Air Rifle target.) Scaled drawings of all targets are shown in the NRA Silhouette Handbook, which is only available from the NRA Silhouette Department. Silhouettes may be painted any color, preferably to contrast against the existing background or light conditions as determined by Tournament Officials.

Any club using any form of electronic or light up target will be permitted to hold a sanctioned match as long as this change is predominantly noted in the match program that shots scored shall not be used for any NRA National Record.

*Note: The dimensions shown below for target thickness and for foot and stand sizes are recommendations; variations to suit local conditions or materials available are acceptable for Approved Tournaments. A 10% plus or minus variation is permitted for the feet of the targets.*

***Due to potential Air Rifle target damage, chickens may be thicker than 1/8."***

Target steel thickness is a very large factor in the weight of the targets. Fullsize High Power Rifle targets should be made of steel which is of the type specified in the NRA Silhouette Handbook, and should be 1/2" thick for chickens and pigs; and 3/8" thick for turkeys and rams.

All half-size Hunter's Pistol targets, that are used for Lever Action competition, should be 3/8" thick. Smallbore Hunter's Pistol targets shall be the same size as Hunter's Pistol except that the rams should be 3/16" thick, turkeys and pigs should be 1/4" thick, and chickens should be 3/8" thick.

Smallbore Rifle targets may be no less than 1/4" and no more than 1/2" thick for the chickens. Pigs, turkeys and rams will be 1/4 inch thick. All silhouettes of the same type shall be of a single uniform thickness.

Air gun Silhouette targets should be made from 1/8" inch thick cold rolled steel and heliarc welded to bases of the same material.

The "feet" and the top of the stands must be the same size with a maximum variation of 10%. Where solid rails are used, pads for each animal should be used and the pad will be considered the stand. For full size targets, the chicken should stand on a 3" x 4" foot, each foot of the pig should be on a 2" x 4" foot; the turkey should stand on a 3" x 8" foot; and each foot of the ram should be 4" x 5". The top of the stand should not be less than 6" above the ground for High Power Rifle and Black Powder Cartridge Rifle competition.

For one-half size targets used in Lever Action, all feet should be 2" x 4" long.

On the one-fifth scale targets used in Smallbore Rifle all feet should be 1 inch wide by 2 inches long. For cast Smallbore Rifle targets that have casting marks or dimples on one side, the smooth side must face toward the shooters for consistent appearance.

Air Gun Silhouette feet should be as follows:

Chickens:	3/4" W x 3/4" L or 3/4" W x 1" L
Pigs:	3/4" W x 1" L
Turkeys:	3/4" W x 3/4" L or 3/4" W x 1" L
Rams:	3/4" W x 2" L

Air gun stands are made by welding a similar sized base to a 30d nail which can either be pushed into the ground or driven into a 2 x 4. Targets should be set free standing at least 2 inches off the ground, but may be elevated to a higher position.

Hinged, remotely resettable targets may be used for smallbore rifle and air gun competition for Registered and Approved Tournaments.

**4.2 Target Setting (Lever Action Only)** - To ensure that full-size rams will be knocked down with reasonable loads, they should be set so that the center of gravity works through a plane intersecting the stands approximately 1 1/4" forward of the rear edge. This can be accomplished by experimentally moving the target to the rear until it topples, and then moving it forward 1". Stands can be designed to incorporate stops to facilitate setting the targets to the proper topple point. Pistol Cartridge Lever Action and Smallbore Lever Action Rifle Targets are to be set full-foot and flush with the backs of their stands.

**4.3 Target Spacing** - Targets should be placed a minimum of one target width apart, but not more than 3 1/2", widths tails to head.

### ALLOWABLE TARGET LINE WIDTH VARIATIONS FOR A SET OF 5 TARGETS MINIMUM TO MAXIMUM

	CHICKEN Min.-Max.	PIG Min.-Max.
High Power, Black Powder Cartridge Rifle and Lever Action	10' 6" to 22' 2"	16' 6" to 34' 10"
Smallbore Rifle	2' 1" to 4' 5"	3' 4" to 7' 0"
Air Rifle	1' to 2' 3"	1' 8" to 3' 6"
Pistol Cartridge Lever Action and Smallbore	5' 3" to 10' 6"	8' 3" to 17' 5"

	TURKEY Min.-Max.	RAM Min.-Max.
High Power, Black Powder Cartridge Rifle and Lever Action	14' 3" to 30' 1"	24' to 50' 8"
Smallbore Rifle	2' 10" to 6' 0"	4' 10" to 10' 2"
Air Rifle	1' 5" to 3' 0"	2' 5" to 5' 1"
Pistol Cartridge Lever Action and Smallbore	7' 1" to 15' 1"	12' to 25' 4"

## 5. POSITIONS

**5.1 The Ground** - All references to "the Ground" in the following position Rules are to be construed as applying to surface of the firing point.

**5.2 Artificial Support** - Any supporting surface except the ground not specifically authorized for use in the Rules for the position prescribed.

**5.2.1 Artificial Support for Black Powder Cartridge Rifle** - Artificial support for Black Powder Cartridge Rifle only shall be in the form of

approved design crossed sticks constructed of two wooden legs, no greater than 1 inch by 2 inches in thickness and width or 1½ inches in diameter, and bolted or tied so that the two legs are hinged and capable of pivoting. The end of the legs may be equipped with spikes no more than 3 inches in length and no wider than the edge of the crossed stick. They may be inserted into the ground by hand pressure only to aid in retention of an upright position. This may be waived by the Match Director to fit local conditions. One layer of protective material may be suspended or inserted in the “V” of the crossed sticks to protect the rifle. All cross sticks will be certified. The non-trigger hand is considered artificial support when in contact with the ground and the rifle butt stock simultaneously.

### **5.3 - 5.7 - Blank**

**5.8 Firing Position** - Any standing position without artificial support. The rifle will be supported by the hands and one shoulder. All parts of one hand must be forward of the pistol grip. The chin may not rest on top of the comb. The stock may not be hollowed, altered or manufactured so as to facilitate chin contact. This does not preclude the use of abrasive materials or finishes.

**5.8.1 Firing Position, Black Powder Cartridge Rifle and Scoped Black Powder Cartridge Rifle** - 200 meters - Any standing position without artificial support. The rifle will be supported by the hands and one shoulder. All parts of one hand must be forward of the pistol grip.

300, 385 and 500 meters - Any position, including crossed sticks, but excluding bench rest.

- (a) A “crossed stick” position is one where the shooter is in a prone, sitting, kneeling or standing position with the barrel or forearm resting in or above the “V” of the crossed sticks in such a manner that no competitor or range personnel are endangered. See 5.2.1.

## **6. RANGE STANDARDS**

**6.1 Firing Line** - The firing line is immediately in front of the firing points. All ranges are measured from this firing line to the face of the targets when targets are placed in their proper position in front of the backstop.

**6.2 Firing Point** - That part of the range provided for the competitor immediately in the rear of the firing line from which firing takes place. Each firing point is numbered to correspond with a bank of targets. Each firing point should have a minimum width of 6 feet.

**6.3 Shelter** - Except in Indoor Air Rifle Silhouette competition, the firing points may be protected with a roof but may not be wholly or partly enclosed. Competitors must be exposed to prevailing winds. This does not preclude the construction of ranges within areas surrounded or partially surrounded by safety walls. Umbrellas or other types of temporary individual shelters are not to be used.

**6.4 Distances** - Matches are commonly fired at ranges of 200, 300, 385, and 500 meters or yards in High Power and Black Powder Cartridge Rifle Silhouette. 50, 100, 150 and 200 meters or yards for Lever Action Silhouette. 40, 50, 75 and 100 meters or yards for Pistol Cartridge Lever Action. and Smallbore Lever Action Rifle Silhouette. 40, 60, 77, and 100 meters or yards for Smallbore Rifle Silhouette and 20, 30, 36, and 45 yards for Air Rifle Silhouette. A +/- 1% variation is permissible.

*Note: Range facilities that are used for Smallbore Rifle, Hunter’s Pistol, Smallbore Hunter’s Pistol and/or Smallbore Pistol may erect a turkey rail or stands at 76 meters/yards, with standard size targets, for the purpose of conducting multi-program Approved and Registered Tournaments. They may also use reduced size pigs for use at the standard 50 Meter (50 Yard) pistol distance. Single purpose ranges must maintain the standard distance for the turkey and pig stands.*

**6.4.1 Alternate Range Distances** - Where available range distances do not permit targets to be placed at their maximum specified distances, tournament sponsors must use targets scaled to shorter distances. In such cases, the

actual distances must be stated in the program, but under no circumstances may High Power and Black Powder Cartridge Rifle Silhouette be fired at a distance closer than 200 yards, nor may Smallbore Silhouette be fired at a distance closer than 40 yards. National Records may be set at certain alternate range distances. See Rule 17.5.

**6.5 Illumination** - Artificial illumination of ranges is authorized.

**6.6 Target and Firing Point Identifications** - Each bank, consisting of five silhouettes of an animal, shall be distinguished from every other bank of the same animal by number boards legible from the firing line placed above or below the center of such banks or by readily distinguished, brightly colored panels placed between contiguous banks. Each firing point shall be marked by numbered small silhouettes, or some other device so as to be readily identified as to which firing point is to be used to fire on each bank.

**6.7 - 6.8 - Blank**

**6.9 Range Flags** - A down range flag shall be exposed at the end or ends of each target line to indicate wind and that the range is in use. Any bright color may be used except red or orange. A red flag or flags should be exposed at the firing line to indicate that the range is in use.

**6.10 Communication** - Communication will be maintained between the target pit and firing line whenever personnel are in the pits.

## 7. COURSES OF FIRE

*The following courses and types of fire are most commonly found in NRA Sanctioned Rifle Silhouette competition, fired on standard targets described in Section 4. See Section 8 for time allowances and Rule 17.5 for courses of fire for which National Records are recognized.*

**7.1 High Power, High Power Semi Automatic Military Rifle, Black Powder Cartridge Rifle and Scoped Black Powder Cartridge Rifle Competition** - A sanctioned match consists of 40, 60, 80 or 120 rounds fired in the standing position on standard High Power Rifle Silhouette targets and appropriate positions in Black Powder Cartridge Rifle (see Rule 5.2.1) as follows (an example of the minimum course of fire):

- (a) Ten Gallina (chicken) targets at 200 meters (or yards).
- (b) Ten Javelina (pig) targets at 300 meters (or yards).
- (c) Ten Guajalote (turkey) targets at 385 meters (or yards).
- (d) Ten Borrego (ram) targets at 500 meters (or yards).

**7.2 Smallbore Rifle Competition** - A sanctioned match consists of 40, 60, 80 or 120 rounds fired in the standing position on one-fifth size standard High Power Rifle Silhouette targets as follows:

- (a) Ten Gallina (chicken) targets at 40 meters (or yards).
- (b) Ten Javelina (pig) targets at 60 meters (or yards).
- (c) Ten Guajalote (turkey) targets at 77 meters (or yards).
- (d) Ten Borrego (ram) targets at 100 meters (or yards).

**7.3 Air Rifle Competition** - A sanctioned match consists of 40, 60, 80 or 120 rounds fired in the standing position on one-tenth size standard High Power Rifle targets as follows:

- (a) Ten Gallina (chicken) targets at 20 yards.
- (b) Ten Javelina (pig) targets at 30 yards.
- (c) Ten Guajalote (turkey) targets at 36 yards.
- (d) Ten Borrego (ram) targets at 45 yards.

**7.3.1 Indoor Air Rifle Competition** - The use of an indoor facility for firing Air Rifle Silhouette shall be permitted. However, all records set under these conditions shall apply only as indoor records. Any range utilizing an indoor facility shall state this on their original application for NRA approval. Course of fire shall be the same as Rule 7.3.

**7.4 Lever Action Competition** - A sanctioned match consists of 40, 60, 80 or 120 rounds fired in the standing position on the below listed targets:

- (a). Lever Action - Standard High Power Rifle Silhouette targets.
- (b). Pistol Cartridge Lever Action - One-half the size of standard High Power Rifle targets. Hunter's Pistol size and type.
- (c). Smallbore Lever Action Rifle - One-half the size of standard High Power Rifle targets. Smallbore Hunter's Pistol size and type.
- (d). Minimum course of fire and distance:
  - 1. Lever Actions
    - (a) Ten Gallina (chicken) targets at 50 meters (or yards).
    - (b) Ten Javelina (pig) targets at 100 meters (or yards).
    - (c) Ten Guajalote (turkey) targets at 150 meters (or yards).
    - (d) Ten Borrego (ram) targets at 200 meters (or yards).
  - 2. Pistol Cartridge Lever Action and Smallbore Lever Action Rifle
    - (a) Ten Gallina (chicken) targets at 40 meters (or yards).
    - (b) Ten Javelina (pig) targets at 50 meters (or yards).
    - (c) Ten Guajalote (turkey) targets at 75 meters (or yards).
    - (d) Ten Borrego (ram) targets at 100 meters (or yards).

## 8. TIME LIMITS

**8.1 Computing Time** - Time is not checked on each shot but is computed on the indicated allowance for each five-shot string. The Chief Range Officer may terminate any relay before completion of the full time allowance, if all competitors in that relay have completed firing.

### 8.2 Time Allowances:

- (a) Ready Time - Fifteen seconds will be allowed after the command **READY (LISTO)** is given before the command **FIRE (FUEGO)**.
- (b) Two and one half minutes will be allowed to fire one shot on each target of a bank of five targets.
- (c) Alibis - 30 seconds will be allowed for each unfired round of the series in which the alibi is allowed.
- (d) Shoot-offs - 30 seconds will be allowed for each shot fired in a shoot-off of ties.
- (e) A minimum of 30 seconds will be allowed between the command **CEASE FIRE** and **READY**.
- (f) Long Run Attempt - A competitor is allowed a 15 second ready and 2 1/2 minutes for five shots. In the event that the first shot is a sighter, the competitor is allowed a 15 second Ready and 30 seconds for the sighter shot.

**8.2.1 Time Allowances** - Black Powder Cartridge Rifle and Scoped Black Powder Cartridge Rifle

- (a) Ready Time - Thirty (30) seconds will be allowed after the command **READY (LISTO)** is given before the command **FIRE (FUEGO)**.
- (b) Five (5) minutes will be allowed to fire one shot on each target of a bank of five targets.

- (c) Alibis - 60 seconds will be allowed for each unfired round of the series in which the alibi is allowed.
- (d) Shoot-offs - 60 seconds will be allowed for each shot fired in a shoot-off for ties.
- (e) A minimum of 30 seconds will be allowed between the command **CEASE FIRE** and **READY**.
- (f) Long Run Attempt - A competitor is allowed a 30-second ready and 5 minutes for 5 shots. In the event that sighting shots are taken, the competitor is allowed a 30-second ready and two minutes for sighting shots.

Cleaning may be done during the 30-second Ready period or during the 5-minute record shot period.

#### • 8.2.2 Time Allowances- All Lever Action Silhouette Rifles

- a) Ready Time- Thirty (30) seconds will be allowed after the command **READY (LISTO)** is given before the command **FIRE (FUEGO)**.
- b) Two minutes will be allowed to fire one shot on each target of a bank of five targets.
- c) Alibis- 30 seconds will be allowed for each unfired round of the series in which the alibi is allowed.
- d) Shoot-offs- 30 seconds will be allowed for each shot fired in a shoot-off of ties.
- e) A minimum of 30 seconds will be allowed between the command **CEASE FIRE** and **READY**.
- f) Long Run Attempt- A competitor is allowed a 30 second Ready and 2 minutes for five shots. In the event that the first shot is a sighter, the competitor is allowed a 30 second Ready and 30 seconds for the sighter shot.
- g) At the match director's discretion, approved matches may adopt the time allowances in Rule 8.2 for safer operation of the firing line.

## 9. COMPETITION REGULATIONS

**9.1 Changing Rifles** - No competitor will change rifles during the firing of any match (other than an aggregate match) unless it has become disabled and has been so designated by the Chief Range Officer. Different rifles may be used during a tournament, but in each individual match the same rifle must be used for all stages in that match, except when rifle failure occurs, and is certified as such by the Range Officer. Only one alibi will be allowed in each match. Claim that a rifle is disabled must be made immediately. All shots fired up to the time that the claim is made will stand as part of the official score. (See Rule 10.9.)

**9.2 Sighting Shots** - Sighting shots are not allowed as a part of the course of fire. This does not prohibit practice matches or practice targets provided all competitors have equal opportunity to enter such events or to use such targets. Practice must not be permitted to interfere with the safe, efficient and scheduled operation of the program.

**9.2.1 Sighting Shots, Black Powder Cartridge Rifle and Scoped Black Powder Cartridge Rifle** - A two minute sighting-in period will be allowed on each bank of targets immediately prior to firing the record stage. No sighting shots, warm up shots or fowling shots will be fired in other than the sighting-in period which will be at the start of and prior to firing the first bank of 5 record shots.

A two minute sighting period will be allowed prior to the firing of the shoot off stage. During this period, shots will be fired on the first available animal in the bank.

**9.3 Case Deflector** - It shall be the competitor's responsibility to see that ejected cases from either semi-automatic or bolt action rifles do not interfere with another shooter. An external case deflector is acceptable.

**9.4 Defective Cartridge** - Only those rounds showing obvious and normal striker impact on the primer without primer detonation shall be considered

“Defective Cartridges”. Improperly loaded rounds shall NOT be accepted as “Alibis”. Improperly loaded rounds include those which will not chamber, are not properly charged with powder, incorporate reversed primers or do not operate normally.

A defective cartridge as defined in this Rule allows a refire, but use of wrong ammunition does not allow a refire.

*Wrong Ammunition: Ammunition which cannot be inserted into the chamber of the firearm, or upon which the bolt or cylinder cannot be closed, regardless of whether or not the cartridge is the same caliber as the firearm in which it is attempted to be used.*

**9.5 Disabled Rifle** - A disabled rifle is one:

- (a) That cannot be safely aimed or fired;
- (b) That has suffered damage so that it cannot be fired or will not function properly; or
- (c) That has suffered the loss of a sight or damage to the sights.

Sights improperly adjusted do not constitute a disabled rifle. A rifle once declared disabled by the Range Officer shall not be used again for competition firing until the defect has been corrected and the rifle has been ruled as safe by the Chief Range Officer. (For procedure in case of a disabled rifle, see Rule 10.9.)

**9.6 Malfunction** - Failure of the rifle to function properly due to mechanical defects or to defective ammunition. Functional failures due to improper manual operation are not to be considered as malfunctions. (For procedure in case of a malfunction, see Rule 10.9.)

**9.7 Continue to Fire** - Competitors at High Power Rifle and Black Powder Cartridge Rifle Silhouette National Championships only who fire a perfect score in an individual stage (hits on all 10 targets at anyone range in a 40-shot match, hits on all 15 targets at anyone range in a 60-shot match or hits on all 20 targets at anyone range in a 80-shot match) will be permitted to continue to fire five-shot strings until missing to provide a means of establishing National Long Run Records either at the conclusion of the 10-, 15- or 20-shot string or at the conclusion of all firing for that day's match, at the match director's discretion. At all other National Championships, such Long Run attempts will be made at the conclusion of the day's match. Those competitors opting to fire at the conclusion of the day's match or where at least 30 minutes have passed since the completion of the 10-, 15- or 20- shot string will be authorized one sighter shot (for Black Powder Cartridge Rifle a two minute period is allowed in which any number of sighting shots may be taken) which may be taken and will not count toward the Long Run Record attempt. (See Rule 8.2(f).) See Rule 8.2.1 (f) for Black Powder Cartridge Rifle. At all other Approved and Registered tournaments, the Match Director will announce in advance when such Long Run attempts will be made.

**9.7.1 “Five-in-a-Row”** - A “five-in-a-row” is made up of valid hits on all 5 silhouettes in any one bank of 5.

**9.8 Examination of Firearms** - Rifles must be weighed, measured and certified before being fired in a match. No one may win an award with an uncertified rifle. In case of a malfunction certified by the Range Officer or Jury, a replacement rifle will be certified.

**9.9 Competitors' Position** - Competitors will take their position at the designated firing point. No portion of the shooter's body may rest upon or touch the ground in advance of the firing line.

**9.9.1 Air Rifle Reservoirs** - The storage of reservoir tanks for either compressed air or CO<sub>2</sub> is prohibited on the firing line or in adjacent spectator areas. See Rule 3.3(c).

## **9.10 - Blank**

**9.11 Matches Not Complete** - When a match or stage is not completed by all competitors in accordance with the tournament schedule, the match or stage may be rescheduled or canceled. Any match or stage which has been completed by all competitors will not be refired. Only scores of a match or stage which has been completed will be included in an aggregate event or for National Record purposes, and a match or stage is not completed unless all competitors have fired.

## **9.12 - Blank**

**9.13 Interference** - With the exception of competitors actually firing, coaches, and such range personnel as may be necessary, the firing points and lines will be kept clear at all times.

**9.14 Refiring** - No competitor will fire more than one score for the same award except as provided in the program or in accordance with Rule 9.11 or Rule 1.7(i).

## **9.15 - 9.22 - Blank**

**9.23 Aliases** - No competitor may fire under an assumed name nor substitute for another in a match; register, enter, or fire in the name of another.

**9.24 Score and Classification Falsification** - No competitor will falsify any score, or classification, nor be an accessory thereto.

**9.25 Cross Fire; Excessive Shots** - No competitor will deliberately fire on the wrong target nor fire more than the required number of shots, including hits and misses on some other competitor's targets.

**9.26 Bribery** - No person will offer a bribe of any kind to any of the range or statistical personnel, or others, nor be an accessory thereto.

**9.27 Disorderly Conduct** - Disorderly conduct or intoxication is strictly prohibited on the range and anyone guilty of same will be expelled from the range. Expelled competitors will be disqualified from that competition with no return of entry fees.

**9.27.1 Willful Destruction of Range Equipment** - No competitor shall cause any range equipment to become damaged through a deliberate act, and anyone guilty of same will be expelled without a warning from the range. Expelled competitors will be disqualified from the competition with no return of entry fees.

**9.28 Refusal to Obey** - No person will refuse to obey the instructions of the Match Director, Range Officers, Jury or of any other officer of the tournament, if instructions are given in the proper conduct of that office.

**9.29 Evasion of Rules** - No competitor will evade nor attempt to evade nor be an accessory to the evasion of any of the conditions of a match as prescribed in the program or in these Rules. Refusal of a competitor or Tournament Official to give testimony regarding facts known to that person concerning violations or attempted violations of these Rules will constitute being an accessory to the violation or attempted violation.

**9.30 Disqualification** - The Match Director or Official Jury, upon proper presentation of evidence, may disqualify any competitor or order the expulsion of same from the range for violation of these Rules or for other conduct they consider discreditable or unsafe. In the event of a disagreement between the Match Director and the Jury, the Jury shall prevail at the match with recourse only to the Protest Committee.

**9.30.1 Disqualification - Safety** - The sponsoring club or Jury shall have the right to bar or disqualify any rifle, load, or competitor at any time for reasons of safety. A competitor firing a shot from the firing line before "ready" (Listo) is given will be disqualified from that day's scheduled match.

**9.30.2 Method for Disqualification** - In cases of infringement and contravention of NRA Rules, the match program, or instructions of the Match Director or Range Officials, the following penalties will be imposed upon the competitor by the Match Director or the Jury in the following order:

- 1) Warning
- 2) Disqualification
  - (a) A warning must be given so that the competitor may have the opportunity to correct the fault. In case of a serious violation of safety regulations, the Match Director or Jury has the authority to impose immediate disqualification.
  - (b) A warning to the competitor must be expressed in such terms as will leave no doubt that it is an official warning. Whenever possible, a warning to the competitor should be given so as not to disturb firing a



shot, unless the infringement concerns safety, in which case the competitor shall be warned immediately.

- (c) For a repeated infringement, the competitor will be disqualified.

**9.31 Suspension** - For violations of these Rules deemed so to justify, any competitor may be suspended from competition and/or expelled from the National Rifle Association upon presentation of evidence and conduct of a hearing as prescribed in the Bylaws.

*NOTE: In as much as the commission of any of the forgoing offenses, Rule 9.23 through 9.29, are of such importance as to be major offenses, all of the forgoing that may merit action under Rule 9.31, shall be sent to the NRA Protest Committee. The complaint shall be in writing, notarized and signed by the complainant.*

## 10. RANGE COMMANDS, CONTROL AND OPERATIONS

**10.1 Discipline** - The safety of competitors, range personnel and spectators requires continuous attention by all to the careful handling of firearms and caution in moving about the range. Self-discipline is necessary on the part of all. Where such self-discipline is lacking it is the duty of the range personnel to enforce discipline and the duty of the competitors to assist in such enforcement. 'Under no circumstances shall firing commence or continue on a range where an unsafe condition exists '.

**10.1.1 Actions Open** - All actions must be open, detachable magazines removed and rifles kept unloaded on a rack, or other safe place with Empty Chamber Indicators in place except when on the firing line after the command "Ready" (Listo) is given. Rifles must remain on the stand or bench and may not be handled between series.

**10.1.2 Rifles Unloaded** - Firearms will not be loaded until the competitor has taken position at the firing point, the firearm pointed toward the targets and the command "READY" has been given for that relay.

**10.1.3 Rifles Loaded** - A firearm that has a cartridge in the chamber or in an attached magazine shall be considered loaded. A loaded firearm shall be pointed in the direction of the targets at all times.

**10.1.4 Cease Firing** - All rifles will be unloaded, detachable magazines removed, and Empty Chamber Indicators inserted immediately upon the command "CEASE FIRE." Actions will remain open.

**10.1.5 Not Ready** - It is the duty of competitors to notify a Range Officer if not ready to fire at the time the command "READY" is given. A competitor who is not ready, and who fails to notify the Range Officer, forfeits the right to fire.

**10.2 Loud Language** - Loud or abusive language will not be permitted. Competitors, scorers, and Range Officers will limit their conversation directly behind the firing line to official business.

**10.3 Delaying a Match** - No competitor will delay the start of a match through tardiness in reporting or undue delay in preparing to fire.

**10.3.1 Preparation Period** - The competitor will be allowed fifteen seconds after the command "READY" (Listo) and before the command "FIRE" (Fuego) during which time the competitor may load, set sights and make any other preparations. This preparation period will be thirty seconds in Black Powder Cartridge Rifle and Lever Action.

**10.3.2 Interrupted Fire** - If firing is interrupted and a "Cease Fire" called before the time limit has expired and before all competitors have completed firing, when firing is resumed those competitors with shots remaining will be given another Ready period and shooting time equal to the unexpired time of the interrupted string but not less than thirty seconds.

**10.4 Policing Range** - It is the duty of competitors to police the firing points after the completion of each stage. The Range Officers will supervise such policing and will see that the firing points are kept clean.

**10.5 Competitors Will Score** - Competitors will act as scorers when requested to do so by the Match Director or Chief Range Officer, except that no competitor will score their own targets.

**10.6 Repeating Commands** - A Range Officer will repeat the Chief Range Officer's commands only when those commands cannot be clearly heard by the competitors under that block officer's supervision.

**10.7 Firing Line Procedures and Commands** - In all cases in which the term "Chief Range Officer" is used, it shall be understood that the Chief Range Officer may designate another person to perform the task of calling the commands listed in this rule. Commands should be issued in a clear voice so that all the competitors may hear them whether the commands are voice unassisted or voice electronically assisted. In extenuating circumstances, commands can be voice relayed by Range Officers so that all competitors will have access to them.

Information is listed below in regular type, **"COMMANDS WILL BE LISTED IN BOLD TYPE!"** Rule numbers are inset in parenthesis to serve as references to further explain these commands and procedures.

In the event of any emergency requiring a cease fire, a Range Officer or any competitor or any other person may give the command, **"CEASE FIRE, UNLOAD!"** This command may be accompanied by a blast on a whistle or other signaling device, or both. All competitors must cease firing immediately when a command **"CEASE FIRE"** is given; remove any detachable magazines, open the actions of their firearms, safely remove all cartridges from internal magazines and await further instruction.

**"AS YOU WERE"** means to disregard the command just given regardless of what it might have been and return to the status immediately preceding the command.

Note: The tempo used to deliver these commands will establish the flow of the match. The best Range Officer (tower talkers) monitor the competitors as they are responding to commands. Then they adjust their tempo of the commands to keep the match moving crisply without causing undue stress on the competitors. Common sense, compassion, a keen sense of pace and a good knowledge of this rule book, are characteristics displayed by talented Range Officers (tower talkers). It is recommended that the Range Officer explain the range commands before starting the match.

- (a) When ready to start a relay, the Chief Range Officer commands, **"RELAY # \_\_\_, COME TO THE LINE."** No shooter will be called to the line until the range is clear. Upon being called to the firing line, competitors shall proceed to their assigned firing points, place their rifles and five loose rounds of ammunition on the shooting stands. Competitors may not touch them until the command "Ready" (Listo) is given. All cartridges will be loaded after the "Ready" command is given. The aforementioned wording pertaining to "loose rounds" and "after the ready command" has to do with High Power Rifle only. Smallbore Rifle/Smallbore Hunting Rifle magazines may be loaded with no more than 5 rounds prior to reporting to the firing line. In Black Powder Cartridge Rifle competition, shooter may bring ammunition boxes to the line and when sighting shots are completed the ammunition box must be closed and only five rounds may be available. In Black Powder Cartridge Rifle, the rifle may be handled to aid in adjusting cross sticks, setting sights, etc., provided that an Empty Chamber Indicator remains in the chamber until the "ready" command is given. (Black Powder Cartridge Rifle competitors, see Rule 10.7(e).) When the competitors have taken their positions on the firing line, the Chief Range Officer commands, **"RELAY # \_\_\_, FOR YOUR FIRST BANK OF FIVE ANIMALS, (PAUSE 1 SEC.) READY" (Listo).** Competitors may at this time handle their rifles, dry-fire as desired, set their sights and load. After fifteen seconds (thirty seconds for Black Powder Cartridge Rifle and Lever Action Rifles), the Chief Range Officer will command **"FIRE" (Fuego).** After 2 1/2 minutes (5 minutes for Black Powder Cartridge Rifle), (2 minutes for all Lever Action Rifles) the Chief Range Officer will command **"CEASE FIRE" (Alto).**

Any shots fired after the **“CEASE FIRE”** command has been given, do not count. Should any shots be fired after the **“CEASE FIRE”** command has been given, the Chief Range Officer should announce **“THAT SHOT IS SCORED AS A MISS.”**

The Chief Range Officer should pause 3 seconds and announce, **“ARE THERE ANY ALIBIS?”** If none are indicated by the line officers, the Chief Range Officer will then command, **“ACTIONS OPEN; INSERT EMPTY CHAMBER INDICATORS; SHOOTERS, MAKE THE LINE SAFE.”**

After the target setting is complete, The Chief Range Officer will command, **“RELAY #\_\_\_ , RETURN TO THE LINE.”** Allow sufficient time for competitors to take their places. The Chief Range Officer will then command, **“RELAY #\_\_\_, FOR YOUR SECOND BANK OF FIVE ANIMALS, (PAUSE 1 Sec.) READY” (Listo).** All of the above commands will be repeated from this point on.

After the relay has completed their stage of fire, the Chief Range Officer will command, **“RELAY #\_\_\_ REMOVE YOUR EQUIPMENT FROM THE LINE.”**

- (b) Each competitor has a bank of 5 silhouettes at which to fire, one shot at each, left to right, in order, in the appropriate time. Hits out of sequence are scored as misses; for example, the second shot hitting the third silhouette is a miss. When a silhouette is down before a shot, a shooter will fire on the remaining ones in order, then return to the left-most target remaining in the bank and fire any unfired rounds at the remaining silhouette or silhouettes as required. If the shooter still has shots unfired and no targets remain standing on that shooter's or another's bank, a range alibi will be declared. The bank will be reset, and the competitor will be allowed a “Ready” period and 30 seconds for each remaining shot. Ricochet hits fired in sequence at properly designated targets count as a hit. Only hits and misses are recorded, and a silhouette must be knocked over or from its rest in order to score a hit. “Turning” a silhouette on its stand does not count as a hit. (See Rule 4.1 for the definition of a “stand”.) There are no refires or alibis except for rifle malfunction or non-firing cartridge. (For time allowance for Black Powder Cartridge Rifle and Lever Action Rifle, see Rule 8.2.1 and 8.2.2.)
- (c) If a malfunction occurs, the competitor will be allowed to use another rifle and/or cartridge, and will be given 30 seconds (one minute for Black Powder Cartridge Rifle) for each unfired round of the series. Such completion firing may be done immediately, or on a later relay, at the Range Officer's discretion, based on the length of the delay involved, such as rifle repair, substitution or other pertinent factors. (See Rule 10.9.)
- (d) Different rifles may be used during a tournament, but in each individual match the same rifle must be used for all stages in that match, except when rifle failure occurs, and is certified as such by the Range Officer (See Rule 9.1). Only one alibi will be allowed in a match.
- (e) Each shooter may have one coach with them on the firing line who may have scopes or binoculars and advise the shooter where shots are going, keep time or otherwise advise. The coach may not touch the shooter or the shooter's equipment between the “Ready” command and the “Cease Fire” command, except that in Black Powder Cartridge Rifle competition, the coach may hand the rifle to the shooter who is in the cross sticks position.

## **10.8 - Blank**

**10.9 Procedure in Case of Defective Cartridge, Disabled Rifle or Malfunction** - If a cartridge fails to fire or a rifle fails to function, the competitor will call the Range Officer. The Range Officer, when satisfied that there is a defective cartridge (Rule 9.4), disabled rifle (Rule 9.5), or malfunction (Rule 9.6) will permit the competitor to replace the unfired cartridge, clear the jam or replace the disabled rifle and continue firing. It is not required that the Range Officer attempt to fire a cartridge before it is declared defective.

The competitor will be given 30 seconds (one minute for Black Powder

Cartridge Rifle) for each unfired round of the series. Such completion firing may be done immediately or on a later relay, at the Range Officer's discretion. Only one such "alibi" for defective ammunition and one such "alibi" for a disabled rifle or malfunction will be allowed in a match. The "alibi limit" rule will not apply during shootoffs. The conduct of shootoffs will be left to the discretion of the Match Director.

The competitor may choose, instead, to replace the defective cartridge or to clear the malfunction and continue to fire. If this choice is made, the competitor forfeits the opportunity to claim an alibi and will not be given additional time

## 11. TOURNAMENT OFFICIALS

*Note: Tournament Officials may not serve as members of the Jury. If there are no NRA Staff at a National Championship site, the Match Director, Chief Range Officer and Chief Statistical Officer shall be prohibited from competing in any National Championship at which they are officiating.*

**11.1 Match Director** - The Match Director is directly responsible for the efficient conduct of the entire tournament. The Match Director may change the match and firing conditions as shown by the program provided a Match Director's Bulletin is posted for the information of all competitors, and that such changes are not contrary to current NRA Rules. The Match Director is directly responsible for the efficient operation of the range and of the Statistical Office and for the safety and proper discipline of all tournament operating personnel, competitors and spectators. Instructions from the Match Director for the operation of the tournament will be complied with by all persons on the range. The Match Director will use the best judgement at all times and behavior and decisions must be characterized by absolute impartiality, firmness, courtesy and constant vigilance. In the application of these Rules, the Match Director will confer with the NRA Official Jury on any doubtful point and the Jury's decision shall prevail at the match with recourse only to the NRA Protest Committee. The Match Director may disqualify a competitor(s) under provisions of Rules 9.30 and 9.30.1.

**11.1.1 Deputy Match Director** - The Deputy Match Director, when appointed, is responsible to the Match Director for the efficient conduct of the entire tournament, and acts for the Match Director in all matters listed in Rule 11.1. A Deputy Match Director is appointed at the discretion of the Sponsor.

**11.2.1 Jury** - In all NRA Approved silhouette tournaments, the Match Director shall appoint a Jury of three persons. In Registered silhouette tournaments, the Match Director shall appoint a Jury of three persons from various geographical locations. See Rule 20.10 for duties and composition of the Jury. Jury members shall exempt themselves from ruling on a matter in which they are personally involved. The Match Director will name a replacement for that Jury member while ruling on that action. The Jury Chairman may disqualify a competitor(s), as directed by the Jury, under provisions of Rule 9.30.

### 11.3 - Blank

**11.4 Range Director** - When appointed, the Range Director and Deputy Range Director are responsible to the Match Director, and have supervisory responsibility for the Chief Range Officers and for the efficient and safe operation of the ranges. Appointment of a Range Director and Deputy Range Director is authorized when multiple ranges are in operation.

**11.4 Chief Range Officer** - Will have full charge of the range and bunkers and will conduct the matches on the schedule approved by the Match Director. The Chief Range Officer is responsible for range safety, and for enforcing all Rules.

**11.5 Range Officers** - Each Range Officer is an assistant to the Chief Range Officer; competitors may be assigned this duty. The Range Officers are responsible for the safety and discipline of range personnel, competitors and spectators in the sector of the range to which assigned. The Range Officer is responsible for seeing that competitors' equipment and positions are as authorized for the particular match being fired. It is the duty of the Range Officers to be completely familiar with the program and with the National Rifle Association Rules, to comply to the best of their ability with all instructions issued by the Match Director or Chief Range Officer and to render all possible

cooperation to other officials. Range Officers must be constantly alert, impartial in the handling of competitors and courteous though firm.

**11.6 Chief Statistical Officer** - The Chief Statistical Officer is in charge of all statistical work in connection with the match except the actual recording of scores. The Chief Statistical Officer is directly responsible to the Match Director. The Chief Statistical Officer is assisted by such Assistant Statistical Officers as may be required.

**11.6.1 Duties of the Statistical Officer** - It is the duty of the Statistical Office to:

- (a) Register competitors and check their eligibility and classification.
- (b) Accept match entries.
- (c) Prepare, post and keep current a list of competitors showing name, competitor number and classification.
- (d) Squad competitors and prepare range assignment cards where such cards are used.
- (e) Prepare official scorecards.
- (f) Check addition on scorecards and correct totals.
- (g) Tabulate scores in order of merit.
- (h) Prepare Preliminary and Official Bulletins.
- (i) Maintain an Official Bulletin Board.
- (j) Determine winners and distribute awards.
- (k) Report to the Match Director and the NRA Official Jury for appropriate disciplinary action any irregularities in firing or scoring which may be indicated by squadding records or scorecards.
- (l) Make required reports to NRA within specified time.
- (m) Enter fired scores in each competitor's classification book, and adjust classification if required.

**11.6.2 Retention of Records** - The Statistical Office will retain in good order all completed official scorecards of Registered Tournament for 30 days.

**11.6.3 Preliminary Bulletins** - Preliminary Bulletins on all matches will be posted promptly on the Official Bulletin Board and remain a reasonable length of time to allow competitors to notify the Statistical Office of apparent errors. The challenge closing time will be stated on each bulletin. However, where a bulletin board is used and all scores of competitors are copied thereon, such will be accepted in lieu of the above, provided a notice appears as to the close of challenging time.

**11.6.4 Official Bulletins** - Official Bulletins will be posted on the Official Bulletin Board. However, in the procedure outlined in 11.6.3 for bulletin boards, such scores shall be acceptable and become final after the elapse of the challenge time period and shall act as an Official Bulletin.

**11.6.5 Correction of Bulletin Errors** - The Statistical Office will correct errors which may come to the attention of the Office prior to the publication of the Official Bulletin.

**11.6.6 Changing Official Bulletins** - No Official Bulletin shall be changed except on authority of the Match Director or Official Jury granted before the time has expired for challenging the last of the Preliminary Bulletins required to cover all the scheduled events. Subsequent changes from the Match Director or Official Jury are limited to correction of:

- (a) Typographical errors.
- (b) Aggregate bulletins on which the total score does not agree with the scores shown on the Official Bulletins for the matches constituting the aggregate.
- (c) Where an error has been made by not following the program schedule of awards.
- (d) Errors in classification of competitors, the competitor having been previously advised of such error and of the correct classification.
- (e) Disqualification of competitors as provided by Rule 9.30.

## 11.7 - Blank

**11.8 National Championship Protest Committee** - A National Championship Protest Committee will be appointed by the Match Director in any NRA National Championship. When such a Championship Protest Committee is appointed, decisions on Protests by that Committee are final, without appeal to the NRA Protest Committee. This committee will be comprised of 5 persons from various geographical locations. When possible cases of suspension arise from an incident or incidents in a Championship, the Championship Protest Committee may not act, but must forward a recommendation to the NRA Protest Committee.

Time frames for the submission of Protests listed in Rule 16.3(c) and (d) may be modified during National Championships at the discretion of the Match Director, provided that notice is published either by means of the Championship Program, or by Match Director's Bulletin. (See Rule 16.2.1)

**11.9 Duty to Competitors** - It shall be the duty of all operating officials and personnel to properly conduct themselves by being fair and impartial to all in carrying out their various duties. No official shall molest a competitor nor allow such practice by another official or other competitors. Should a competitor's equipment or demeanor warrant disqualification from an individual match or tournament, it should be done in such a manner as will cause the least inconvenience to all concerned. In so doing, the official should state to the competitor the Rule or section of Rules under which the disqualification is being made.

## 12. TEAM OFFICERS' DUTIES

**12.1 Team Captain** - Each team must have a designated Team Captain, who is responsible for maintaining discipline within the team squad. The Team Captain will at all times cooperate with the officials of the tournament in the interests of safety, efficiency and good sportsmanship. The Team Captain is responsible for all the duties of members of the team. It is the Team Captain's responsibility to:

- (a) Be familiar with the program.
- (b) Make proper entries.
- (c) Have team members report to the proper firing point at the right time ready to fire.
- (d) Check scores, sign scorecards and make challenges.
- (e) Check preliminary and Official Bulletin and Official Notices.
- (f) Make protests.
- (g) Collect awards.

**12.2 Team Coach** - The Team Coach is the Team Captain's deputy performing such duties as the Captain may assign. The Coach serves as Team Captain in the absence of the latter, and under such circumstances becomes responsible for maintaining discipline within the team and for all other responsibilities of the Team Captain.

**12.3 Team Entries** - In team matches the team officers, all firing members of the team, and alternate firing members if allowed by the match conditions and provided by the team, must be named on the entry form before the first shot of the match is fired. The Team Captain or Coach must be so named if also a firing member. See Rule 2.10.

**12.4 Substitution of Alternates** - If alternates are allowed and have been named on the entry form, the Team Captain may substitute an alternate for a firing member at any time before the firing member concerned has fired the first shot of the match (sighting or record), notifying the Scorer and a Range Officer accordingly. After a team member has fired the first shot, that team member may be substituted for only in case of disabling emergencies such as accident or illness, and then only if approved by the Chief Range Officer. All shots fired by the replaced shooter count; the replacement fires only the uncompleted portion of the replaced shooter's course of fire.

## 13. PHYSICALLY DISABLED SHOOTERS

**13.1 Physically Disabled Shooters** - A shooter who because of a physical disability cannot fire from one or more of the prescribed shooting positions outlined in these Rules, or who must use special equipment when firing, is privileged to petition the NRA Protest Committee for permission to assume a special position or to use modified equipment, or both. The petition will be accompanied by pictures of the shooter in the position for which approval is desired and, if special equipment is required, the pictures will show how this equipment is used. The petition and all pictures must be furnished in exact duplicate. The petition must be accompanied by a medical doctor's statement if the physical disability is not completely evident in the pictures submitted.

- (a) Each petition will be reviewed by the NRA Protest Committee. The Committee may require additional or supplementary statements, medical information or pictures. If approved, the NRA Secretary will issue a special authorization certificate to the individual concerned. Such certificates will have necessary pictures attached.
- (b) Shooters who have received special authorization certificates are required to present them when requested by officials of the competition.
- (c) In the event of a protest involving the position or the equipment used by such a shooter, the Jury will compare the questioned position or equipment with the certificate and photographs presented by the shooter. If the shooter's position or equipment does not in the opinion of the officials, conform to that authorized by the NRA Secretary (or if the shooter has no authorized certificate or pictures), the protest shall be allowed and the shooter will be required to change immediately to the position or equipment which has been approved or to an otherwise legal position or equipment.
- (d) Should a protest be carried beyond the Jury, the original protest will be endorsed by the Jury Chairman to show the action the Jury has taken and will be forwarded to the National Rifle Association.
- (e) National Records and Grand Slams may not be established by use of scores fired in special positions or with special equipment as may be authorized according to this Rule.
- (f) Two types of authorizations are issued: temporary and permanent. Permanent authorizations are issued to competitors who are permanently disabled.

## 14. SCORING

### 14.1 - 14.2 - Blank

**14.3 How to Score** - All shots are scored by marking either an "O" for a miss, or an "X" for a hit in the correct spaces on the scorecard. The scorecard is marked in the same order as the targets are fired, i.e., beginning in the first space on the left and progressing to the right until the stage is complete. Hits out of sequence are scored as misses; for example, the second shot hitting the third silhouette is a miss. (See Rule 10.7(b)). All spaces on the scorecard must be filled in either with an "O" or an "X" as appropriate. Each shooter is responsible for checking with the scorekeeper immediately after firing the 5 rounds to be sure that credit has been given for the correct number of hits. There will be no appeal if the silhouettes have been returned to the stands.

**14.3.1 Scorer's Duties** - The scorer will be positioned behind the competitor where both the competitor and the bank of targets can be observed. The scorekeeper will record the value of each shot before the next shot is fired. It is the scorekeeper's responsibility to see that the competitor observes the Rules and time limits, fires no more than five rounds per series and when strong wind is a factor, to watch silhouettes closely so that it can be determined when a silhouette is blown over and not knocked down by a bullet.

**14.4 Misses** - Any shot which does not knock the proper silhouette over or from its stand will be scored a miss. "Turning" a silhouette on its stand will be counted as a miss. Any target that is hit, causing one or both feet to be moved off the stand or pad, and make contact with another supporting surface, but still remain upright, shall be scored as a hit. If, through the fault of the competitor, fewer than the prescribed number of shots are fired, or shots are fired on the wrong target, the competitor is scored a miss for each unfired shot or each shot fired on a wrong target.

**14.5 Early or Late Shots** - A competitor firing a shot from the line before "Ready" (Listo) is given will be disqualified from the day's scheduled match. Any shots, including sighting shots (Black Powder Cartridge Rifle), fired between the "Ready" (Listo) and "Fire" (Fuego) commands will be scored as a miss. Shots fired upon closing of the bolt or action when on the firing line will be scored as record shots. Any shot fired after the command "Cease Fire" (Alto) will be scored as a miss.

**14.6 All Shots Count** - All shots fired by a competitor after taking position at the firing point will be counted in the competitor's score even if the rifle may be accidentally discharged.

**14.6.1 Discharge of Propellant** - Any release of the propelling charge without the pellet hitting the target, whether a pellet has been loaded or not, will be scored as a miss.

**14.7 Hits on Wrong Target** - Hits on the wrong target are scored as misses.

**14.8 Ricochets** - Ricochet hits fired in sequence at properly designated targets count as hits.

**14.9 - 14.11 - Blank**

**14.12 Insufficient Hits** - If, through the competitor's fault, fewer than the required number of shots are fired, that competitor shall be scored a miss for each unfired shot.

**14.13 - 14.14 - Blank**

**14.15 Scorecards** - Scorecards will be prepared by the Statistical Office and delivered to the competitors.

**14.16 Erasures on Scorecards** - A Scorer is not permitted to make any erasures, corrections or changes on the scorecard. If a correction is necessary, it must be made and initialed by the Range Officer. To make corrections, the Range Officer draws a line, or lines, through the incorrect score and places the correct score above, initialing opposite the correct score.

## 15. DECISION OF TIES

**15.1 Match** - The term "Match" as used in this section refers to all individual, team, and aggregate matches.

**15.2 - Blank**

**15.3 In all matches except Black Powder Cartridge Rifle Silhouette, ties will be decided as follows:**

All ties in all matches will be broken by shootoffs immediately following the match except when the competitors involved agree on a different method. If a shootoff occurs, the following method will be used, starting on the first standing target in the assigned bank. Subsequent shots, if needed, will continue to be fired on the first standing target

- (a) Open, Special Awards, Master and AAA shooters will shoot one shot at a designated turkey, but, if ties remain, will proceed to fire additional shots at turkeys until all ties are resolved. For class awards, AA shooters will shootoff on rams, A shooters on chickens and B shooters on pigs.
- (b) Alternate methods of tie-breaking may be used.



The shooter will be given a 15 second “Ready” period and 30 seconds firing time for each shot. Shots fired during a shootoff will not count toward any Long Run attempt.

**15.3.1 In all Black Powder Cartridge Rifle Silhouette matches, ties will be decided as follows:**

All ties in all matches will be broken by shootoffs immediately following the match except when the competitors involved agree on a different method. If a shootoff occurs, the following method will be used:

- (a) Open, Special Awards (except Juniors), Master and AAA shooters will shoot one shot at a designated chicken, but, if ties remain, will proceed to fire additional shots at chickens until all ties are resolved. Special Award shootoffs for Juniors will be as follows: Sub-junior will shootoff on pigs; Intermediate juniors will shootoff on rams and Juniors will shootoff on turkeys. For class awards, AA shooters will shootoff on turkeys, A shooters on rams and B shooters on pigs.
- (b) **Alternate methods of tie-breaking** may be used.

The shooter will be given a 30-second “Ready” period and 60 seconds firing time for each shot. (See Rule 9.2.1.) Shots fired during a shootoff will not count toward any Long Run attempt.

## 16. PROTESTS

### 16.1 - Blank

### 16.2 Protests - A competitor may formally protest;

- (a) Any injustice which the competitor feels has been done.
- (b) The conditions under which another competitor has been permitted to fire.
- (c) The equipment which another competitor has been permitted to use.

**16.2.1 Authority of Protest Committees** - National Championships protest committees or juries may be established at National Championships to rule on protests arising from activities at those sites (see Rule 11.8). However, the decisions of these special protest committees or juries shall not contravene prior interpretations of the NRA Rules and/or precedents established by the NRA National Protest Committee.

**16.3 How to Protest** - A protest must be initiated immediately upon the occurrence of the protested incident. Failure to comply with the following procedure will automatically void the protest

- (a) State the complaint orally to the Chief Range Officer or Chief Statistical Officer, whoever applies. If not satisfied with that decision, then
- (b) State the complaint orally to the Match Director. If not satisfied with the Match Director's decision, then
- (c) State the complaint orally to the members of the Jury. If not satisfied with their decision, then
- (d) File a formal protest in writing with the Match Director stating all the facts in the case. Such written protest must be filed within one hour of completion of the match.
- (e) The Match Director will then forward the protest with a complete statement of facts within 48 hours of receipt thereof to the Protest Committee at NRA Headquarters.

## 17. NATIONAL RECORDS

**17.1 Establishment of National Records** - Scores to be recognized as National Records must be fired in NRA Registered Tournaments. National Records must be approved by the Jury at the particular Match involved, and by

the National Rifle Association before being declared Official. National Records are maintained in the Open, Woman, Junior, Intermediate Junior, Sub-Junior and Senior categories.

**17.2 Scores to be used** - Scores must be complete scores for an entire scheduled match. Stage scores or scores for only part of a match will not be used for Records.

### **17.3 - Blank**

**17.4 Scores for National Team Records** - Such scores will be the aggregate of the scores fired by the individual team members, in either individual or team matches or over the courses of fire established in Rule 17.5, for three member teams representing NRA Clubs as provided in Rule 2.11, or three member teams representing State Associations as provided in Rule 2.12, and must be fired in NRA Registered Tournaments. National Records will not be recognized for “pickup” teams.

### **17.5 Courses of Fire for which National Records are recognized -**

*Note: Records in all forms of Silhouette competition, except Long Run Records (see Rule 17.5.1), are established only in Registered Tournaments which are sanctioned by NRA. In order to be recognized by NRA, scores must be fired at the full distances specified. The scores may be fired at either the full stated metric distances or at the alternate English distances (yards) provided that proportionately sized targets are used; and must be submitted to NRA by the Statistical Officer of the Tournament in which they were fired after being certified by the Jury. National Record Reporting Forms are mailed to sponsors of NRA sanctioned Registered Tournaments by NRA Headquarters.*

- (a) High Power Rifle, High Power Hunting Rifle, Black Powder Cartridge Rifle and Scoped Black Powder Cartridge Rifle: 40-shot Club Match Course: 40 shots as follows:
  - a. Ten Gallina (chicken) targets at 200 meters (or yards).
  - b. Ten Javelina (pig) targets at 300 meters (or yards).
  - c. Ten Guajalote (turkey) targets at 385 meters (or yards).
  - d. Ten Borrego (ram) targets at 500 meters (or yards).
- (b) High Power Rifle, High Power Hunting Rifle, Black Powder Cartridge Rifle and Scoped Black Powder Cartridge Rifle: 60-shot Club Match Course: 60 shots as follows:
  - a. Fifteen Gallina (chicken) targets at 200 meters (or yards).
  - b. Fifteen Javelina (pig) targets at 300 meters (or yards).
  - c. Fifteen Guajalote (turkey) targets at 385 meters (or yards).
  - d. Fifteen Borrego (ram) targets at 500 meters (or yards).
- (c) High Power Rifle, High Power Hunting Rifle, Black Powder Cartridge Rifle and Scoped Black Powder Cartridge Rifle: 80-shot Regional Match Course: 80 shots (two 40-shot Club Courses).
- (d) High Power Rifle, High Power Hunting Rifle, Black Powder Cartridge Rifle and Scoped Black Powder Cartridge Rifle: 120-shot National Match Course: 120 shots (three 40-shot Club Courses or two 60-shot Club Courses).
- (e) Small bore Rifle and Small bore Hunting Rifle: 40-shot Club Match Course: 40 shots as follows:
  - a. Ten Gallina (chicken) targets at 40 meters (or yards).
  - b. Ten Javelina (pig) targets at 60 meters (or yards), or 50 meters (or yards).

- c. Ten Guajalote (turkey) targets at 77 meters (or yards).
  - d. Ten Borrego (ram) targets at 100 meters (or yards).
- (f) Smallbore Rifle and Smallbore Hunting Rifle: 60-shot Club Match Course: 60 shots as follows:
  - a. Fifteen Gallina (chicken) targets at 40 meters (or yards).
  - b. Fifteen Javelina (pig) targets at 60 meters (or yards), or 50 meters (or yards).
  - c. Fifteen Guajalote (turkey) targets at 77 meters (or yards).
  - d. Fifteen Borrego (ram) targets at 100 meters (or yards).
- (g) Smallbore Rifle and Smallbore Hunting Rifle: 80-shot Regional Match Course: 80 shots (two 40-shot Club Courses).
- (h) Smallbore Rifle and Smallbore Hunting Rifle: 120-shot National Match Course: 120 shots (three 40-shot Club Courses or two 60-shot Club Courses).
- (i) Air Rifle (Indoor/Outdoor): 40-shot Club Match Course: 40 shots as follows:
  - a. Ten Gallina (chicken) targets at 20 yards.
  - b. Ten Javelina (pig) targets at 30 yards.
  - c. Ten Guajalote (turkey) targets at 36 yards.
  - d. Ten Borrego (ram) targets at 45 yards.
- (j) Air Rifle (Indoor/Outdoor): 60-shot Club Match Course: 60 shots as follows:
  - a. Fifteen Gallina (chicken) targets at 20 yards.
  - b. Fifteen Javelina (pig) targets at 30 yards.
  - c. Fifteen Guajalote (turkey) targets at 36 yards.
  - d. Fifteen Borrego (ram) targets at 45 yards.
- (k) Air Rifle (Indoor/Outdoor): 80-shot Regional Match Course: 80 shots (two 40-shot Club Courses).
- (l) Air Rifle (Indoor/Outdoor): 120-shot National Match Course: 120 shots (three 40-shot Club Courses or two 60-shot Club Courses).
- (m) Lever Actions: 40-shot Club Match Course: 40 shots as follows:
  - a. Ten Gallina (chicken) targets at 50 meters (or yards).
  - b. Ten Javelina (pig) targets at 100 meters (or yards).
  - c. Ten Guajalote (turkey) targets at 150 meters (or yards).
  - d. Ten Borrego (ram) targets at 200 meters (or yards).
- (n) Lever Actions: 60-shot Club Match Course: 60 shots as follows:
  - a. Fifteen Gallina (chicken) targets at 50 meters (or yards).
  - b. Fifteen Javelina (pig) targets at 100 meters (or yards).
  - c. Fifteen Guajalote (turkey) targets at 150 meters (or yards).
  - d. Fifteen Borrego (ram) targets at 200 meters (or yards).

- (o) Lever Actions: 80-shot Regional Match Course: 80 shots (two 40-shot Club Courses).
- (p) Lever Actions: 120-shot National Match Course: 120 shots (three 40-shot Club Courses or two 60-shot Club Courses).
- (q) Pistol Cartridge Lever Action and Smallbore Lever Action Rifle: 40-shot Club Match Course: 40 shots as follows:
  - a. Ten Gallina (chicken) targets at 40 meters (or yards).
  - b. Ten Javelina (pig) targets at 50 meters (or yards).
  - c. Ten Guajalote (turkey) targets at 75 meters (or yards).
  - d. Ten Borrego (ram) targets at 100 meters (or yards).
- (r) Pistol Cartridge Lever Action and Smallbore Lever Action Rifle: 60-shot Club Match Course: 60 shots as follows:
  - a. Fifteen Gallina (chicken) targets at 40 meters (or yards).
  - b. Fifteen Javelina (pig) targets at 50 meters (or yards).
  - c. Fifteen Guajalote (turkey) targets at 75 meters (or yards).
  - d. Fifteen Borrego (ram) targets at 100 meters (or yards).
- (s) Pistol Cartridge Lever Action and Smallbore Lever Action Rifle: 80-shot Regional Match Course: 80 shots (two 40-shot Club Courses).
- (t) Pistol Cartridge Lever Action and Smallbore Lever Action Rifle: 120-shot National Match Course: 120 shots (three 40-shot Club Courses or two 60-shot Club Courses).

**17.5.1 Long Run National Records** - National Records for Long Runs (consecutive hits on one type of animal) may be set at any level of NRA Sanctioned Silhouette Competition (Approved or Registered Tournaments).

- (a) A competitor will have successfully obtained a National Long Run Record when he/she has hit all targets beginning with the first animal in the first bank and ending with a total not less than ten that equals or is greater than the existing record regardless of whether the competitor qualifies to continue to fire as per Rule 9.7.

**17.6 Co-holder Records** - Tie breaking Rules will not be employed when establishing National Records. Co-holder status will be accorded to individual or teams when their score equals an existing National Record.

## 18. COMPETITORS' DUTIES AND RESPONSIBILITIES

*Note: The following competitor's duties are in addition to those specified elsewhere throughout these Rules.*

**18.1 Discipline** - It is the duty of each competitor to sincerely cooperate with tournament officials in the effort to conduct a safe, efficient tournament. Competitors are expected to promptly call the attention of proper officials to any infraction of rules of safety or good sportsmanship. Failure of a competitor to cooperate in such matters or to give testimony when called upon to do so in any case arising out of infractions of these Rules may result in said competitor being considered as an accessory to the offense.

**18.2 Knowledge of Program** - It is the competitors' responsibility to be familiar with the program. Officials cannot be held responsible for a competitor's failure to obtain and be familiar with the program.

**18.3 Eligibility** - It is the competitor's duty to enter only those events for which that competitor is eligible and to enter in the proper classification.

**18.4 Classification** - It is the competitor's duty to have possession of a current Classification Card when competing in competition using a classification system. Unclassified competitors will be classified per rule 19.7.

**18.5 Individual Entries** - In individual matches, it is the duty of the competitor to make proper entry on the forms and in the manner prescribed for that tournament. Errors due to illegibility or improper filling out of forms are solely the competitor's responsibility. The Statistical Office is not required to accept corrections after entry closing time.

**18.6 Squadding Tickets** - It is the competitor's duty to secure a squadding ticket (or scorecard used as a squadding ticket) for each match (or to consult the squadding bulletin) in ample time to permit reporting at the proper time and place to fire each match. It is not the duty of officials to page competitors in order to get them on the firing line. Competitors, upon receipt of squadding tickets, should inspect them for correctness of competitor's number and non-interference in squadding assignments. Errors should be reported immediately to the Statistical Officer.

**18.7 Reporting at Firing Point** - Competitors must report at their assigned firing point immediately when the relay is called by the Range Officer. The proper rifle and ammunition for that particular match must be ready and in safe firing condition. Time will not be allowed for firearm repairs, sight blacking, sight adjustments or search for missing equipment after a relay has been called to the firing line.

**18.8 Timing** - Time for the firing of a series (within the official time limit) is the competitor's responsibility.

**18.9 Loading** - No competitor will load a gun except at the firing point and after command "READY" has been given by the Range Officer.

**18.10 Cease Firing** - When the command "CEASE FIRING" is given by anyone, all firing will immediately cease. Rifles will be unloaded and detachable magazines removed. Competitors will await further commands or instructions to be given by the Range Officer. Actions will remain open.

**18.11 Checking Scores and Signing Scorecards** - It is the duty of competitors to check their scores as written on their scorecards and to sign their scorecards at the conclusion of each series or stage. Failure to check scores within the time limit forfeits the right to challenge.

**18.12 Clearing the Firing Point** - It is the competitor's duty to leave the firing point promptly at the conclusion of the relay. When leaving the firing point, guns must be unloaded with actions open and Open Bolt Indicators in place.

**18.13 Checking Bulletin Board** - It is the duty of all individual competitors and Team Captains to check the Bulletin Board between each match. The Statistical Officer must be immediately notified of apparent errors. Official Bulletins must be checked and the Statistical Officer notified of any discrepancies between the Preliminary and Official Bulletins. Match Director's Bulletins on the Bulletin Board have the same effect as conditions printed in the program. It is the duty of competitors to familiarize themselves with all such Bulletins.

#### **18.14 - Blank**

**18.15 Responsibility** - It shall be the competitor's responsibility:

- (a) That all equipment meets all Rules and match specifications in any match in which that equipment is to be used.
- (b) That competitor's position conforms to the Rules.
- (c) That competitor has full knowledge of the rules under which the match is fired.
- (d) That after due warning on any infraction of existing Rules, that competitor shall understand a repetition thereof shall be the subject of disqualification for that match or tournament.
- (e) Any competitor who fails to perform the squadded assignment for scoring and/or setting targets may be disqualified from the entire tournament.

## 19. CLASSIFICATION

**19.1 Classified Competitors** - Individuals who are officially classified by the NRA for Silhouette competition, or who have a record of scores fired over courses of fire used for classification (See Rule 19.4) which have been recorded in a Score Record Book (See Rule 19.14).

**19.2 Unclassified Competitor** - A person who does not have a current NRA Silhouette Classification.

**19.3 Foreign Competitor Classification** - Non-U.S. Citizens will compete using classifications per current home country classification system.

**19.4 Scores used for Classification** - Scores used for Silhouette Classification are those scores fired in NRA Sanctioned Silhouette Tournaments. These must be tournaments of at least 40 shots which include an equal number of shots at each of the 4 types of targets. Courses of fire other than the standard 40-shot course may be scheduled by the sponsor provided that such courses of fire are combinations of 5-shot strings at authorized distances and that an equal number of shots are fired on each of the 4 types of targets.

### 19.5 - Blank

### 19.6 - Blank

**19.7 Lack of Classification Evidence** - It is the competitor's responsibility to have an NRA Official Classification Card or Score Record Book with required scores for temporary classification (see Rules 19.1 and 19.14) and to present such classification evidence when required. Any competitor who cannot present such evidence will fire in the highest available class. A competitor's classification will not change during a tournament except under conditions listed in Rule 19.17.1. A competitor will enter a tournament under the currently correct classification and fire the entire tournament in that class. Should it be discovered during a tournament that a competitor has entered in a class lower than the one in which currently rated, the tournament records will be corrected to show the correct classification for the entire tournament.

**19.8 Competing In a Higher Class** - Any individual or team may elect, before firing, to compete in a higher classification than the one in which class.

### 19.9 - 19.11 - Blank

**19.12 Team Classification** - Teams are classified by computing the "team average" based on the classification of each firing member of the team. To compute this "team average" the key in Table No. I for the different classes will be used and the team total divided by the number of firing members of the team. Any fractional figure in the team average of one half or more will place the team in the next higher class. The "team average" will establish classification of the team as a unit but will not affect in any way the individual classification of team members

TABLE NO. I - TEAM

<i>Class</i>	<i>Key</i>
Master .....	5
AAA.....	4
AA.....	3
A .....	2
B.....	1

**19.13 Reporting Scores** - NRA competition (see Rule 1.6) sponsors will report to the NRA all individual and fired team match scores fired over the courses stated in Rule 19.4. Scores from all tournaments and sanctioned leagues will be reported by each sponsor no more than 30 days following completion of the tournament firing schedule. Any 'Breakout' scores (see Rule 19.17.1) must be noted in the tournament report.

**19.14 Score Record Book** - (Initial Classification)- A competitor who does not have a regular NRA Silhouette classification will obtain an NRA

“Score Record Book” from the NRA Supervisor, or Tournament Statistical Office, in which he will enter all his Silhouette scores fired in NRA sanctioned individual and team competition of the types defined in Rule 1.6 subparagraphs (c) through (h) inclusive. Scores from at least one complete tournament are required in order to establish an initial classification. The Score Record Book classification is superseded when the competitor’s regular classification becomes active in the classification system.

### 19.15 Individual Classification Scores

- (a) High Power Rifle/Target Air Rifle (Indoor and Outdoor):

	<b>40</b>	<b>60</b>	<b>80</b>
<b>Master</b>	32 - 40	48 - 60	63 - 80
<b>AAA</b>	26 - 31	39 - 47	51 - 62
<b>AA</b>	20 - 25	30 - 38	39 - 50
<b>A</b>	13 - 19	19 - 29	25 - 38
<b>B</b>	0 - 12	0 - 18	0 - 24

- (b) High Power Hunting Rifle/Sporter Air Rifle (Indoor and Outdoor)/  
High Power Semi-Automatic Military Rifle:

	<b>40</b>	<b>60</b>	<b>80</b>
<b>Master</b>	29 - 40	43 - 60	57 - 80
<b>AAA</b>	23 - 28	34 - 42	45 - 56
<b>AA</b>	17 - 22	25 - 33	33 - 44
<b>A</b>	11 - 16	16 - 24	21 - 32
<b>B</b>	0 - 10	0 - 15	0 - 20

- (c) Black Powder Cartridge Rifle / Scoped Black Powder Cartridge Rifle:

	<b>40</b>	<b>60</b>	<b>80</b>
<b>Master</b>	31 - 40	46 - 60	61 - 80
<b>AAA</b>	26 - 30	39 - 45	51 - 60
<b>AA</b>	21 - 25	31 - 38	41 - 50
<b>A</b>	16 - 20	24 - 30	31 - 40
<b>B</b>	0 - 15	0 - 23	0 - 30

- (d) Smallbore Rifle/Open Air Rifle (Indoor and Outdoor):

	<b>40</b>	<b>60</b>	<b>80</b>
<b>Master</b>	34 - 40	51 - 60	67 - 80
<b>AAA</b>	28 - 33	42 - 50	55 - 66
<b>AA</b>	21 - 27	31 - 41	41 - 54
<b>A</b>	15 - 20	22 - 30	29 - 40
<b>B</b>	0 - 14	0 - 21	0 - 28

- (e) Smallbore Hunting Rifle:

	<b>40</b>	<b>60</b>	<b>80</b>
<b>Master</b>	32 - 40	48 - 60	63 - 80
<b>AAA</b>	26 - 31	39 - 47	51 - 62
<b>AA</b>	20 - 25	30 - 38	39 - 50
<b>A</b>	15 - 19	22 - 29	29 - 38
<b>B</b>	0 - 14	0 - 21	0 - 28

- (f) Lever Action Silhouette Rifle/Pistol Cartridge Lever Action Silhouette Rifle/Smallbore Silhouette Rifle:

	<b>40</b>	<b>60</b>	<b>80</b>
<b>Master</b>	35 - 40	53 - 60	70 - 80
<b>AAA</b>	29 - 34	44 - 52	57 - 69
<b>AA</b>	22 - 28	33 - 43	43 - 56
<b>A</b>	15 - 21	22 - 32	29 - 42
<b>B</b>	0 - 14	0 - 21	0 - 28

**19.16 Establishing Classification** - Competitors will receive their first classification on the basis of the first match fired with a minimum of 40 shots. Scores are maintained in the classification database..

**19.16.1 Retaining Classification** - Classification, once achieved, shall not change until reclassification criteria has been followed as in Rule 19.17 or 19.17.1.

**19.17 Reclassification** - Competitors will be reclassified to a higher classification when they fire two scores in any higher classification to go from B class upward or three scores in any higher classification to go from A, AA, or AAA upward. Scores fired in the previous 24 months will be used to reclassify upward. Classifications will not expire. Reclassification to a lower classification will occur only by petition to the NRA Silhouette Department, and only if a competitor has fired 12 consecutive scores in a lower classification. Such downward reclassification may take place only once every two years. No competitor may be reclassified downward more than one class at a time. Also, if a shooter, once reclassified downward (example: AAA to AA), fires a score which falls into the previous higher class (AAA), that shooter will return to the previous higher class (AAA) at the conclusion of that tournament. No competitor will be changed in classification during the course of a tournament, except under the conditions listed in Rule 19.17.1.

**19.17.1 Reclassification during a Registered Match** - If a competitor shoots a score which is two or more classes above the currently held classification, that competitor shall be reclassified to one class below the class in which such high score falls, for that current match and thereafter. Example: If a Class A competitor shoots a AAA score, that competitor will immediately be reclassified to AA for that current match and thereafter. All shooters reclassified in this way must be reported to the NRA Competitive Shooting division.

## 20. OFFICIAL JURY

### 20.1 - 20.9 - Blank

**20.10 NRA Official Jury** - At all NRA Sanctioned matches, the Match Sponsor shall appoint a Jury to be composed of persons who may or may not be competitors in the match, who are recognized as Metallic Silhouette shooters and who are familiar with the NRA Rules governing Silhouette matches (see Rule 11.2.1). Tournament Officials may not serve as members of the Jury. This Jury shall act on any protest or dispute concerning procedures, equipment or any other question which may arise during the tournament.



## 21. NRA COMPETITION PROGRAMS

*Tournament programs must describe the conditions of the matches, the positions, firearms allowed, ammunition, targets, ranges, and should cover all the following points:*

**TOURNAMENT NAME:** Do not designate “State Championship” unless authorized by the State Association; “Regional Championship” unless authorized by the NRA.

**TOURNAMENT DATE(S):** Date or dates of tournament.

**SPONSORING ORGANIZATION:** Name of Club or Association.

**FOR INFORMATION CONCERNING TOURNAMENT WRITE TO:** Give name and complete address as you want it listed in *Shooting Sports USA* Coming Events section.

**DIRECTIONS TO RANGE:** List directions clearly.

**RULES:** State any additional rules required by the conditions of the competition concerned. Where NRA Rules show alternative conditions, the least restrictive apply unless the program sets forth limitations.

**COMPETITION OPEN TO:** State the restrictions, if any, on entries.

**REGISTRATION FEE:** List amount of tournament registration fee to be charged each competitor and what it entitles the competitor to (brassard, competitor number badge, etc., and a copy of the Official Bulletin).

**ENTRIES:** List name and address of person to whom entries should be mailed.

**ENTRY FEE:** State amount per match (team and individual).

**ENTRIES CLOSE:** State date and time.

**POST ENTRIES:** Show that Post Entries will or will not be accepted, closing time and fee.

**ENTRY LIMIT:** State number of entries that will be accepted.

**FIRING STARTS:** State hour first relay of first match will begin each day.

**CLASSIFICATION OF COMPETITORS:** If classes are to be combined, list details.

**AWARDS:** List schedule of awards for individual and team matches. Specify method, time and place of issuing awards.

**MATCH SCHEDULE AND CONDITIONS:** Give complete details on courses of fire, types of sights, firearms allowed, calibers, etc.

**GENERAL INFORMATION:** List eating facilities, housing facilities, etc.

**REPORTS:** The Match Director is responsible for being certain that the match results and any fees are sent to NRA within 30 days of the completion of the tournament. Any Official Bulletins which the Club desires to send to NRA may be sent at the same time.

## APPENDIX A

### GENERAL REGULATIONS FOR NRA APPROVED SILHOUETTE TOURNAMENTS

*The following Regulations have been adopted by the NRA Silhouette Committee to establish procedures for NRA sanction of Approved Silhouette Tournaments, and to provide standards for organization and operation of silhouette tournaments. It should be noted that there are two types of NRA Sanctioned Tournaments: Approved and Registered. Registered Tournaments are the only ones in which National Records (see Rule 17.5) may be established (except for Long Run Records), and require a fee of \$3.50 per competitor. State Championships require a fee of \$4.50 per competitor, and Regional Championships require a fee of \$6.50 per competitor. No per-shooter fee is required for NRA Approved Silhouette Tournaments.*

**1. Approval of NRA Approved Tournament(s):** To obtain approval of tournaments, the following steps must be taken by the sponsoring organization in advance of the tournament date.

- (a) Send NRA your completed application and draft copies of your completed programs **30 days** in advance of tournament date.
- (b) NRA will review the program and notify you if changes are required. As soon as a tournament is granted sanction, a copy of the signed application and program will be returned to the tournament sponsor as authority to conduct the tournament.
- (c) If the above is not done, the NRA reserves the right to cancel its sanction of the tournament.
- (d) In order to be listed in *Shooting Sports USA*, your applications and programs must be received by the Competitive Shooting Division by the 15th of the month, three months before the month of issue.

**2. Rules:** Tournaments must be conducted under current NRA Rules.

**3. Courses of Fire:** Silhouette courses of fire are listed in this NRA Silhouette Rulebook. The normal course of fire for an Approved Tournament is a single 40-shot match, 10 shots at each target. Other courses of fire may be used, subject to NRA approval of the program.

**4. Awards:** Sponsors will furnish all awards. An awards schedule must be part of the tournament program. The method, time and place of issuance of awards is at the option of the sponsor with due notice to the competitors in the Tournament Program.

**5. Entry Fees:** Sponsors may charge competitors an entry fee, which must be stated in the program.

**6. Classification:** See section 19.

**7. Tournament Officials as Competitors:** Officials may compete in Approved Silhouette Tournaments.

**8. Squadding:** Sponsors may squad competitors as they desire. It is suggested that squadding be done in relays, with all targets and distances used in each relay, depending on the number of competitors and target bays available.

**9. Club Jury Representatives:** A Club Jury Representative must represent the club in each Approved Tournament, and must be named at the time of filing the application. In the case of multiple tournament approval, more than one person may be named. The Club Jury Representative will be a member of the Jury and will act in the same capacity as the other two Jury

members. The Match Director, Chief Range Officer and Chief Statistical Officer may NOT be members of the Jury.

**10. NRA Membership:** Competitors are encouraged, but not required, to hold NRA individual membership. However, sponsors may require NRA individual membership if they so desire.

**11. National Records:** Approved Tournament scores are eligible for National Long Run Records only.

**12. Bulletin Boards:** A bulletin board must be maintained for posting scores.

**13. Conflicting Dates:** It is the responsibility of Approved Tournament sponsors to arrange their tournament schedule so as not to conflict with other tournaments in the same area.

**14. Reports:** The Match Director is responsible for being certain that the match results and any fees are sent to NRA within 30 days of the completion of the tournament. Any Official Bulletins which the Club desires to send to NRA may be sent at the same time.

## **APPENDIX B**

### **GENERAL REGULATIONS FOR NRA REGISTERED SILHOUETTE TOURNAMENTS**

*The following Regulations provide standard procedures for all Registered Tournaments including Regional and National Championships. State Championships MUST be approved and recognized by the State Association (Rule 1.6).*

**1. Approval of NRA Registered Tournament(s):** To obtain approval of tournaments, the following steps must be taken by the sponsoring organization in advance for the tournament date.

- (a) Send NRA your completed application and draft copies of your completed programs **45 days** in advance of tournament date.
- (b) NRA will review the program and notify you if changes are required. As soon as a tournament is granted sanction, one copy of the signed application and program will be returned to the tournament sponsor as authority to conduct the tournament.
- (c) If the above is not done, the NRA reserves the right to cancel its sanction of the tournament.
- (d) In order to be listed in *Shooting Sports USA*, your applications and programs must be received by the Competitive Shooting Division by the 15th of the month, 3 months before the month of issue.

**2. Granting of “Registered” Sanction:** As soon as a tournament is granted Registered sanction, one copy of the signed application, program, and Official Sanction Poster will be returned to the sponsor. All changes and information provided in the approved draft program must appear in the final printed program. No major changes such as courses of fire, number of matches, etc, may be made unless NRA is notified. This may be done in writing if time permits, or by including a copy of the Official Notice which makes the changes with the final results of the tournament.

**3. Tournament Cancellation:** If a tournament is cancelled, NRA must be notified immediately.

**4. Classification of Competitors:** The NRA classification system must be used in Registered Tournaments.

## **5. Courses of Fire in Registered Tournaments, National Records**

**and Classifications:** National Records may be set only in Registered Tournaments using courses of fire specified in Rule 17.5. Courses of fire which are used for classification are specified in Rule 19.4.

**6. Awards:** All awards are furnished by the sponsor. The method, time and place of issuance of awards is at the option of the sponsor with due notice to the competitors in the Tournament Program. In Registered Tournaments, the minimum award schedule must consist of the following:

**(a) Individual Match Awards Required:**

- (1) Winner in each individual fired match and in each aggregate, awarded to the competitor with the highest total score. Match winners may not receive a class award, but must be counted in with other members of that class to determine the number of class awards.
- (2) High Scoring Competitor in each class in each match. Classes may be combined because of low entry, but the manner in which such combinations are made must be clearly stated in the program.

**(b) Team Awards Required:** If there are team matches in the program, the winning team of each team match will be the team firing the highest total score in the match.

## **7. Entry Fees:**

- (a) **NRA Registration Fee:** A fee of \$3.50 per competitor is charged by the NRA for Registered Tournaments other than State, Regional or National Championships.
- (b) **Sponsor Entry Fees:** The amount of these fees is determined by the sponsor, and must be stated in the program separately from the NRA Registration Fees.

**8. Tournament Officials as Competitors:** If there are no NRA Staff at a National Championship site, the Match Director, Chief Range Officer and Chief Statistical Officer may NOT compete in any National Championship at which they are officiating. Rule 11 covers specific duties of Tournament Officials.

**9. NRA Membership:** Competitors are encouraged, but not required, to hold NRA individual membership. However, sponsors may require NRA individual membership if they so desire

**10. Reports to NRA:** The Match Director is responsible for making certain that the following reports are forwarded to NRA within 30 days of firing.

- (a) A registration fee reporting form, and remittance of \$3.50 per competitor.
- (b) A copy of any Official Notice.
- (c) A completed National Record Reporting form, if National Records were set.
- (d) Two complete sets of "Official Final Results Bulletin" for the tournament.

**11. Final Results Bulletin:** A copy of the official FINAL RESULTS BULLETIN must be sent to each competitor participating in the tournament within 30 days.

*Note: The requirement to get the Final Results Bulletin to competitors within 30 days may be met by posting the results on an internet web site, provided competitors can download and/or print a paper copy. Sponsors who post electronic results will provide the competitors with the web site address and must provide a paper copy upon request.*

## **NRA GRAND SLAM SILHOUETTE CLUB**

The purpose of this club is to provide special recognition to Silhouette shooters of exceptional merit, similar to “495 Club” in Conventional High Power Rifle and the “2650 Club” in Conventional Pistol.

The NRA will keep records on 10 in-a-rows as they are reported and when a shooter has fired a 10 in-a-row on each animal in any discipline, the shooter will be awarded a serially-numbered Grand Slam pin and a special recognition certificate. To receive credit for 10 straight, the 10 shots must be continuous (example: the first, middle or last 10 shots in a 20 shot match). These pins are enameled in the same colors as the 5, 10 and 15 in-a-row pins currently in use (orange for High Power Rifle, peach for High Power Hunting Rifle, brown for Smallbore Rifle, tan for Smallbore Hunting Rifle, blue-green for Hunter’s Pistol, lime green for Hunter’s Pistol Metallic Sights, white for Smallbore Hunter’s Pistol, pink for Smallbore Hunter’s Pistol Metallic Sights, yellow for Long Range Pistol Standing, dark green for Long Range Pistol Unlimited Freestyle 1/2-size, dark blue for Air Rifle, light blue for Air Pistol, red for Smallbore Pistol Standing, grey for both Black Powder Cartridge Rifle and Scoped Black Powder Cartridge Rifle, maroon for all Lever Action Rifles). The 10 in-a-rows on each of the four animals do not have to be fired in the same match. The NRA will accept reports of 10 in-a-rows fired as far back as January 1981, for everything except Long Range Pistol Freestyle events (Freestyle must be fired on half-size targets so we will accept them going back to January 1982) PROVIDED THESE RETROACTIVE REPORTS ARE ACCOMPANIED BY A RESULTS BULLETIN FROM THE MATCH INVOLVED.

Reporting forms for this program will be provided to all sponsors of NRA Sanctioned Silhouette matches. Only scores fired in NRA sanctioned competition are eligible for consideration, and to be eligible for the Grand Slam, each 10 in-a-row must have been fired at distances no less than the yard distance listed in Rule 17.5. Only the first 10 in-a-row on a particular animal (such as chickens) will be recorded until the other three 10 in-a-rows are fired, (pigs, turkeys, rams) and the Grand Slam pin awarded. However, the shooter may be working on several Grand Slam pins in different disciplines at the same time. For example, the shooter may have fired 10 in-a-row chickens in High Power Rifle and 10 in-a-row pigs in Smallbore Rifle and is, thus, working on two separate Grand Slam awards.

Effective 1 Jan. 1989, no Grand Slam Awards or records will be issued or maintained for other than the disciplines above and in Rule 17.5.1.

# INDEX

<i>Item</i>	<i>Rule</i>
Actions Open .....	10.1.1
Air Rifle Reservoirs .....	9.9.1
Aliases .....	9.2.3
Alibis .....	10.9
All Shots Count .....	14.6
Alternates, Substitution of .....	12.4
Ammunition .....	3.17
Artificial Illumination .....	6.5
Support .....	5.2, 5.2.1
Authorization .....	1.2
Refusal or Withdrawal of .....	1.5
Authorized NRA Tournaments .....	1.6
Rules .....	1.3
Breaking Ties .....	15
All Matches .....	15.3
Black Powder Cartridge Rifle .....	15.3.1
Bribery .....	9.26
Bulletin Board, Checking .....	18.13
Bulletin, Official .....	11.6.4
Changing .....	11.6.6
Correction of Errors .....	11.6.5
Match Director's .....	11.1, 18.13
Notices .....	18.13
Preliminary .....	11.6.3
Buttplate, Adjustable .....	3.15
Buttplate, Hook .....	3.15
Cartridge, Defective .....	9.4, 10.9
Case Deflector .....	9.3
Categories .....	2.5
Cease Fire .....	10.1.4, 18.10
Changing Rifles .....	9.1
Cheekpiece .....	3.4.1, 3.15
Classification .....	19
Books .....	19.5
Changing in a Tournament .....	19.7
Competing in Higher Class .....	19.8
Competitors .....	18.4, 19.1
Establishing .....	19.16
Falsification .....	9.2.4
Foreign Competitor .....	19.3
Individual Scores .....	19.15
Lack of Evidence .....	19.7
Reclassification .....	19.17
Retaining .....	19.16.1
Scores used for .....	19.4
Team .....	19.12
Unclassified .....	19.2
Clothing .....	3.12
Coaching .....	10.7 (e), 12.2
Commands, Firing Line .....	10.7
Repeating .....	10.6
Communication .....	6.10
Compensators .....	3.16.1
Competition, Types .....	1.6
League .....	1.6(h)
NRA .....	1.0
Programs .....	21
Team .....	2.10
Competitor	
Classification .....	18.4
Classified .....	19.1
Discipline .....	10.1, 18.1
Disqualification .....	9.30
Duty to .....	11.9
Eligibility .....	18.3

<i>Item</i>	<i>Rule</i>
Individual Entries.....	18.5
Intermediate Junior .....	2.3.1
Junior.....	2.3
Knowledge of Program.....	18.2
Physically Disabled.....	13.1
Position.....	9.9
Residence .....	2.20
Responsibility.....	18
Senior .....	2.2.1
Sub-Junior .....	2.3.2
Suspension.....	9.31
Unclassified.....	19.2
Will Score .....	10.5
Conduct, Disorderly.....	9.27
Courses of Fire.....	7
For National Records .....	17.5
Cross Fires .....	9.25
Crossed Sticks.....	5.2.1
Defective Cartridge.....	9.4
Procedure.....	10.9
Disabled Competitors, Physically.....	13.1
Discharge of Propellant .....	14.6.1
Discipline .....	10.1
Display, Red Flag .....	6.9
Disqualification.....	9.30
Method For.....	9.30.2
Safety.....	9.30.1
Distance, Firing.....	6.4
Distance, Firing, Alternate.....	6.4.1
Ear Protection .....	3.20
Eligibility, Competitor.....	18.3
Empty Chamber Indicator.....	3.21
Entries, Individual.....	18.5
Entries, Team .....	12.3
Equipment .....	3
General.....	3.18
Eye Protection.....	3.19
Firearms, Examination.....	9.8
Fire, Continue to .....	9.7
Course of.....	7
Firing Line .....	6.1
Commands.....	10.7
Firing Point.....	6.2
Clearing.....	18.12
Identification .....	6.6
Reporting at.....	18.7
Shelter .....	6.3
Firing Position.....	5.8
Black Powder Cartridge Rifle.....	5.8.1
Five-in-a-Row .....	9.7.1
Flags .....	6.9
Gauge, Clothing.....	3.12(a)
General Equipment .....	3.18
General Regulations, NRA Tournaments.....	1.4
Gloves .....	3.11
Ground, The .....	5.1
Illumination.....	6.5
Individual	
Classification, Matches Used For .....	19.4
Duties and Responsibilities.....	18
Entries .....	18.5
Intermediate Junior .....	2.3.1
Junior.....	2.3
National Records, Scores for .....	17.2
Senior .....	2.2.1
Squadded Matches .....	1.7(g)
Sub-Junior .....	2.3.2
Unsquadded Match .....	1.7(h)
Interference .....	9.13

<i>Item</i>	<i>Rule</i>
Intermediate Junior .....	2.3.1
Interrupted Fire .....	10.3.2
Junior.....	2.3
Jury.....	11.2.1, 20.10
Knowledge of Program.....	18.2
Lack of Classification Evidence.....	19.7
Leagues .....	1.6(h)
Loading .....	18.9
Loud Language .....	10.2
Malfunction.....	9.6
Procedure.....	10.9
Match .....	1.7(a), 15.1
Aggregate .....	1.7(l)
Approved.....	1.6(g)
Classified.....	1.7(e)
Courses.....	7
Delaying a .....	10.3
Invitational .....	1.7(f)
Not Complet.....	9.11
NRA Sanctioned .....	1.1, 1.6
Open .....	1.7(c)
Re-Entry .....	1.7(i)
Regional .....	1.6(d)
Registered.....	1.6(f)
Restricted.....	1.7(d)
Squadding Tickets.....	18.6
Stage.....	1.7(b)
State Championship .....	1.6(e)
Members, NRA.....	2.1
Foreign .....	2.1.1
Muzzle Brakes .....	3.16.1
National Championship Matches.....	1.6(c)
National Championship Protest Committee .....	11.8, 16.2.1
National Records.....	17
Co-Holder.....	17.6
Continue to Fire For.....	9.7
Course of Fire For.....	17.5
Establishment of.....	17.1
Long Run.....	17.5.1
Scores Used.....	17.2
Team.....	17.4
Not Ready .....	10.1.5
Officers	
Chief Range.....	11.4.1
Chief Statistical .....	11.6
Deputy Match Director .....	11.1.1
Match Director .....	11.1
Range Director .....	11.4
Range.....	11.5
Officials, Tournament.....	11
Padding .....	3.12
Palm Rest .....	3.14
Physically Disabled Shooters .....	13.1
Positions.....	5
Competitors' .....	9.9
Firing .....	5.8, 5.8.1, 5.8.2
Preparation Period.....	10.3.1
Procedures.....	10.7
Program.....	21
Changes to.....	11.1, 18.13
Knowledge of.....	18.2
Protests .....	16.2
Authority of Protest Committees .....	16.2.1
How to.....	16.3
Public Affairs.....	Sec. 1
Range	
Alibi.....	10.7(b)
Flags.....	6.9

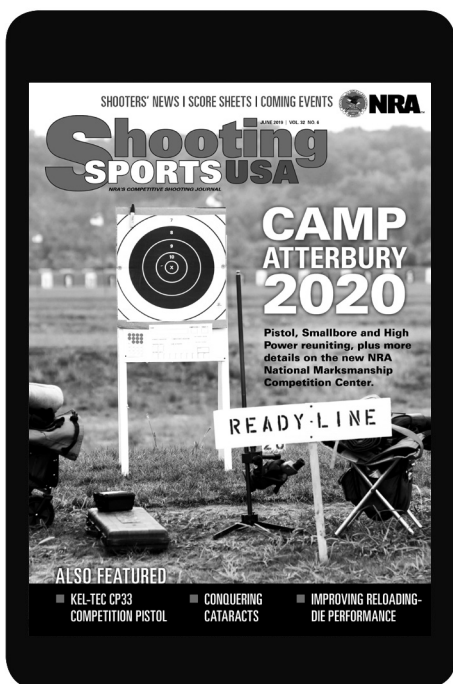


<i>Item</i>	<i>Rule</i>
Not Ready .....	10.1.5
Policing .....	10.4
Standards .....	6
Reclassification .....	19.17
During a Registered Match .....	19.17.1
Records, Retention of .....	11.6.2
Red Flag, Display .....	6.9
Re-Entry .....	1.7(i)
Refiring .....	9.14
Refusal of NRA Authorization .....	1.5
Refusal to Obey .....	9.28
Regional Matches .....	1.6(d)
Registered	
Matches .....	1.6(f)
Tournaments .....	1.6(f)
General Regulations .....	App. B
Programs .....	21
Regulations, General, NRA Tournaments .....	1.4
Release Triggers .....	3.16
Reporting at Firing Point .....	18.7
Residence, Competitor's .....	2.20
Responsibility, Competitor's .....	18.15
Ricochets .....	14.8
Rifles .....	3
Air .....	3.3
Black Powder Cartridge .....	3.4, 3.4.1
Certification .....	3, 9.8
Changing .....	9.1
Lever Action .....	3.1.3
Disabled .....	9.5
High Power .....	3.1
High Power Hunting .....	3.1.1
High Power Semi Automatic Military .....	3.1.2
Loaded .....	10.1.3
Procedures .....	10.9
Smallbore .....	3.2
Smallbore Hunting .....	3.2.1
Unloaded .....	10.1.2
Rules .....	1.3
Evasion of .....	9.29
Safety .....	10.1.1
Sanctioned Leagues .....	1.6(h)
Scorecards .....	14.15
Checking .....	18.11
Erasures On .....	14.16
Falsification .....	9.24
Signing .....	18.11
Scorer's Duties .....	14.3.1
Scoring .....	14
All Shots Count .....	14.6
Discharge of Propellant .....	14.6.1
Early Shots .....	14.5
Hits on Wrong Target .....	14.7
How to .....	14.3
Insufficient Hits .....	14.12
Late Shots .....	14.5
Misses .....	14.4
Ricochets .....	14.8
Ties, Decision of .....	15
Senior .....	2.2.1
Shooting Mats .....	3.10
Shots	
Excessive .....	9.25
Interrupted Fire .....	10.3.2
Sighting .....	9.2
Sighting, Black Powder Cartridge Rifle .....	9.2.1
Sights, Lever Action, Fiber Optic .....	3.1.3
Slings .....	3.13

<i>Item</i>	<i>Rule</i>
Special Awards .....	2.5
Spotting Scopes.....	3.8
Squadded Individual Match.....	1.7(g)
Squadded Team Match .....	1.7(j)
Stage.....	1.7(b)
Standing Position .....	5.8
State Association Teams.....	2.12
Championships.....	1.6(e)
Statistical Office Duties.....	11.6.1
Sub-Junior.....	2.3.2
Support, Artificial.....	5.2, 5.2.1
Suspension .....	9.31
Targets.....	4
Numbers .....	6.6
Spacing.....	4.3
Team Match .....	1.7(k), 1.7(l)
Teams	
Captain .....	12.1
Classification.....	19.12
Club.....	2.11
Coach.....	12.2
Representation.....	2.10
State Association.....	2.12
Tickets, Squadding.....	18.6
Ties, Decision of.....	15
All Matches.....	15.3
Black Powder Cartridge Rifle.....	15.3.1
Time	
Allowance .....	8.2
Allowance, Black Powder Cartridge Rifle .....	8.2.1
Computing.....	8.1
Timing.....	18.8
Tournament Officials.....	11
Chief Range Officer.....	11.4
Chief Statistical Officer .....	11.6
Deputy Match Director .....	11.1.1
Duty to Competitors.....	11.9
Jury .....	11.2.1
Match Director .....	11.1
National Championship Protest Committee .....	11.8
Range Officers .....	11.5
Tournaments, Types of	
Approved.....	1.6(g)
International Matches.....	1.6(a)
International Team Tryouts.....	1.6(b)
National Championships .....	1.6(c)
Postal Matches .....	1.6(i)
Regional Championships .....	1.6(d)
Registered.....	1.6(f)
Sanctioned Leagues.....	1.6(h)
Special .....	1.6(j)
State and Senior Games .....	1.6(k)
State Championships.....	1.6(e)
Tuner.....	3.1.1
Unclassified Competitors.....	19.2
Unloaded Rifle .....	10.1.2
Unsquadded, Individual Match.....	1.7(h)
Team Match .....	1.7(k)
Willful Destruction of Range Equipment.....	9.27.1
Withdrawal of NRA Authorization .....	1.5

# NOTES

# The best resource for competitive shooters.



HOW-TO ARTICLES

FIREARM REVIEWS

MATCH SCHEDULES

TOURNAMENT REPORTS, SCORES AND PHOTOS

COVERAGE FROM NATIONAL CHAMPIONSHIPS

**Did we forget to say it's a  
free monthly online magazine?  
Sign up for *Shooting Sports USA* today.**

**SSUSA.ORG**

NO OBLIGATION. CANCEL AT ANY TIME.